

2012 Census of California Water Transit Services



MTI Report 12-02



MINETA TRANSPORTATION INSTITUTE

The Norman Y. Mineta International Institute for Surface Transportation Policy Studies was established by Congress in the Intermodal Surface Transportation Efficiency Act of 1991 (ISTEA). The Institute's Board of Trustees revised the name to Mineta Transportation Institute (MTI) in 1996. Reauthorized in 1998, MTI was selected by the U.S. Department of Transportation through a competitive process in 2002 as a national "Center of Excellence." The Institute is funded by Congress through the United States Department of Transportation's Research and Innovative Technology Administration, the California Legislature through the Department of Transportation (Caltrans), and by private grants and donations.

The Institute receives oversight from an internationally respected Board of Trustees whose members represent all major surface transportation modes. MTI's focus on policy and management resulted from a Board assessment of the industry's unmet needs and led directly to the choice of the San José State University College of Business as the Institute's home. The Board provides policy direction, assists with needs assessment, and connects the Institute and its programs with the international transportation community.

MTI's transportation policy work is centered on three primary responsibilities:

Research

MTI works to provide policy-oriented research for all levels of government and the private sector to foster the development of optimum surface transportation systems. Research areas include: transportation security; planning and policy development; interrelationships among transportation, land use, and the environment; transportation finance; and collaborative labor-management relations. Certified Research Associates conduct the research. Certification requires an advanced degree, generally a Ph.D., a record of academic publications, and professional references. Research projects culminate in a peer-reviewed publication, available both in hardcopy and on TransWeb, the MTI website (<http://transweb.sjsu.edu>).

Education

The educational goal of the Institute is to provide graduate-level education to students seeking a career in the development and operation of surface transportation programs. MTI, through San José State University, offers an AACSB-accredited Master of Science in Transportation Management and a graduate Certificate in Transportation Management that serve to prepare the nation's transportation managers for the 21st century. The master's degree is the highest conferred by the California State University system. With the active assistance of the California

Department of Transportation, MTI delivers its classes over a state-of-the-art videoconference network throughout the state of California and via webcasting beyond, allowing working transportation professionals to pursue an advanced degree regardless of their location. To meet the needs of employers seeking a diverse workforce, MTI's education program promotes enrollment to under-represented groups.

Information and Technology Transfer

MTI promotes the availability of completed research to professional organizations and journals and works to integrate the research findings into the graduate education program. In addition to publishing the studies, the Institute also sponsors symposia to disseminate research results to transportation professionals and encourages Research Associates to present their findings at conferences. The World in Motion, MTI's quarterly newsletter, covers innovation in the Institute's research and education programs. MTI's extensive collection of transportation-related publications is integrated into San José State University's world-class Martin Luther King, Jr. Library.

DISCLAIMER

The contents of this report reflect the views of the authors, who are responsible for the facts and accuracy of the information presented herein. This document is disseminated under the sponsorship of the U.S. Department of Transportation, University Transportation Centers Program and the California Department of Transportation, in the interest of information exchange. This report does not necessarily reflect the official views or policies of the U.S. government, State of California, or the Mineta Transportation Institute, who assume no liability for the contents or use thereof. This report does not constitute a standard specification, design standard, or regulation.

REPORT 12-02

2012 CENSUS OF CALIFORNIA WATER TRANSIT SERVICES

Richard M. Kos, AICP
Brent Carvalho
Maria-Louise Javier
Asha Weinstein Agrawal, Ph.D.

December 2012

A publication of

Mineta Transportation Institute

Created by Congress in 1991

College of Business
San José State University
San José, CA 95192-0219

TECHNICAL REPORT DOCUMENTATION PAGE

1. Report No. CA-MTI-12-1133	2. Government Accession No.	3. Recipient's Catalog No.	
4. Title and Subtitle 2012 Census of California Water Transit Services		5. Report Date December 2012	
		6. Performing Organization Code	
7. Authors Richard M. Kos, AICP, Brent Carvalho, Maria-Louise Javier and Asha Weinstein Agrawal, Ph.D.		8. Performing Organization Report MTI Report 12-02	
9. Performing Organization Name and Address Mineta National Transit Research Consortium Mineta Transportation Institute College of Business San José State University		10. Work Unit No.	
		11. Contract or Grant No. DTRT12-G-UTC21	
12. Sponsoring Agency Name and Address California Department of Transportation U.S. Department of Transportation Office of Research—MS42 Research & Innovative Technology Admin. P.O. Box 942873 1200 New Jersey Avenue, SE Sacramento, CA 94273-0001 Washington, DC 20590		13. Type of Report and Period Covered Final Report	
		14. Sponsoring Agency Code	
15. Supplemental Notes			
16. Abstract The US Bureau of Transportation Statistics conducts a nationwide census of ferry boat operators for the US Department of Transportation and the collected information is used for statistical purposes. The Caltrans Division of Local Assistance has been asked by the Federal Highway Administration (FHWA) to gather data regarding ferry operations under MAP-21, the Moving Ahead for Progress in the 21st Century Act. MAP-21 includes a new formula program for ferry boats and ferry terminal facilities eligible under 23 USC 129(c) which authorizes federal participation in toll roads, bridges, tunnels, and ferries. FHWA has asked that Caltrans assure the ferry boat data is current for MAP-21. The Mineta Transportation Institute was contacted by Caltrans to conduct this research. The research team compiled a spreadsheet and accompanying maps that include ferry boats, routes, and operators along with a number of related characteristics including ownership (public or private), daily trip counts, regulation of fares, terminal locations (street address and coordinates), boarding statistics, and route segment lengths. The spreadsheet contains fields that will allow it to be linked in a Geographic Information System to Caltrans Earth software for further analysis. Additionally, where relevant, the report includes a brief description of expansion plans for certain ferry service providers.			
17. Key Words Water transit; Water transportation; Census; Survey; California		18. Distribution Statement No restrictions. This document is available to the public through The National Technical Information Service, Springfield, VA 22161	
19. Security Classif. (of this report) Unclassified	20. Security Classif. (of this page) Unclassified	21. No. of Pages 68	22. Price \$15.00

Copyright © 2012
by **Mineta Transportation Institute**
All rights reserved

Library of Congress Catalog Card Number:
Pending

To order this publication, please contact:

Mineta Transportation Institute
College of Business
San José State University
San José, CA 95192-0219

Tel: (408) 924-7560
Fax: (408) 924-7565
Email: mineta-institute@sjsu.edu

transweb.sjsu.edu

ACKNOWLEDGMENTS

We are most grateful for the guidance and preliminary water transit operator data provided by Kevin Pokrajac, Chief, Caltrans Office of Special and Discretionary Programs, Division of Local Assistance. Additionally, Albert Soares, Caltrans Ferry Boat Discretionary Program Coordinator, provided very helpful assistance. We also wish to acknowledge the kind assistance of the ferry operator contacts who provided the detailed data reflected in this census. The authors also wish to thank MTI Executive Director Rod Diridon for providing overall guidance and great enthusiasm for this project, MTI Deputy Executive Director and Research Director Karen Philbrick for assisting us with moving this report to completion; and Cathy DeLuca for her thorough and thoughtful critique of our work. Finally, the authors also thank MTI Director of Communications and Technology Transfer Donna Maurillo; Student Publications Assistant Sahil Rahimi; Research Support Assistant Joey Mercado; and Webmaster Frances Cherman, who also provided editorial and publication support.

TABLE OF CONTENTS

Executive Summary	1
I. Research Methodology	5
II. 2012 Census of Commuter and Non-Commuter Water Transportation Services in California	7
San Francisco Bay Area Water Transit Services	7
Sacramento/Delta Area Water Transit Services	28
Santa Barbara Area Water Transit Services	34
Los Angeles/Orange County Area Water Transit Services	44
San Diego Area Water Transit Services	56
III. “Circular”/Recreational Water Transit Services in California	63
About the Authors	65
Peer Review	67

LIST OF FIGURES

1. Overview of San Francisco Bay Area Water Transit Services	9
2. Alcatraz Cruises	11
3. Angel Island – Tiburon Ferry Company	13
4. Blue and Gold Fleet	15
5. Golden Gate Bridge Highway and Transportation District	17
6. Water Emergency Transportation Authority	19
7. Tideline Marine Group	21
8. San Francisco Water Taxi Co.	23
9. Westar Marine Services	25
10. Santa Cruz Port District, Harbor Water Taxi	27
11. Overview of Sacramento/Delta Area Water Transit Services	29
12. Caltrans Water Transit Services	31
13. San Joaquin County Department of Public Works	33
14. Santa Barbara Area Water Transit Services	35
15. Island Packers Corporation	37
16. Avila Beach Water Taxi	39
17. Santa Barbara Water Taxi	41
18. Ventura Water Taxi	43
19. Los Angeles/Orange County Area Water Transit Services	45
20. Balboa Island Ferry	47
21. Catalina Express	49
22. Long Beach Transit	51
23. Catalina Flyer	53

24. Marina Del Rey Waterbus	55
25. San Diego Area Water Transit Services	57
26. Flagship Cruises and Events	59
27. Mission Bay Water Taxi	61

LIST OF TABLES

1. Commuter and Non-Commuter Water Transit Services by Region	2
2. Summary of Commuter and Non-Commuter Water Transit Services in the San Francisco Bay Area	8
3. Alcatraz Cruises	10
4. Angel Island – Tiburon Ferry Company	12
5. Blue and Gold Fleet	14
6. Golden Gate Bridge Highway and Transportation District	16
7. Water Emergency Transportation Authority	18
8. Tideline Marine Group	20
9. San Francisco Water Taxi Co.	22
10. Westar Marine Services	24
11. Santa Cruz Port District, Harbor Water Taxi	26
12. Summary of Commuter and Non-Commuter Water Transit Services in the Sacramento/Delta Area	28
13. Caltrans Water Transit Services	30
14. San Joaquin County Department of Public Works	32
15. Summary of Commuter and Non-Commuter Water Transit Services in the Santa Barbara Area	34
16. Island Packers Corporation	36
17. Avila Beach Water Taxi	38
18. Santa Barbara Water Taxi	40
19. Ventura Water Taxi	42
20. Summary of Commuter and Non-Commuter Water Transit Services in the Los Angeles/Orange County Area	44
21. Balboa Island Ferry	46

22. Catalina Express	48
23. Long Beach Transit	50
24. Catalina Flyer	52
25. Marina Del Rey Waterbus	54
26. Summary of Commuter and Non-Commuter Water Transit Services in the San Diego Area	56
27. Flagship Cruises and Events	58
28. Mission Bay Water Taxi	60
29. “Circular”/Recreational Water Transportation Operators in California	63

EXECUTIVE SUMMARY

This study provides a comprehensive assessment of current ferry operations in the state of California. This work was conducted to assist the California Department of Transportation (Caltrans) comply with requirements in the federal MAP-21 legislation (the Moving Ahead for Progress in the 21st Century Act). MAP-21 is the first multi-year transportation authorization enacted since 2005 and funds surface transportation programs at over \$105 billion for fiscal years 2013 and 2014. The Caltrans Division of Local Assistance has been asked by the Federal Highway Administration (FHWA) to gather data regarding ferry operations under MAP-21 since the Act includes a new formula program for ferry boats and ferry terminal facilities eligible under 23 USC 129(c) which authorizes federal participation in toll roads, bridges, tunnels, and ferries. FHWA has asked that Caltrans assure the ferry data is current for MAP-21.

Our first task was to develop a complete listing of all ferry operators in the state. The research revealed that water transit vessels in California provide services beyond what is commonly considered to be traditional “ferry” operations, and this necessitated the creation of three primary classifications of water transit service: commuter, non-commuter, and recreational/“circular”. Broadly speaking:

- **Commuter services** are commonly understood as “ferries” and provide essential, “point A to point B” transportation such as traditional vehicle or passenger ferries.
- **Non-commuter** services also provide “point A to point B” operations but provide a variety of connecting services beyond those that are essential for vehicle and passenger commuting purposes.
- **Recreational/“circular” services** begin and end at the same terminal and include services such as dinner cruises or sport fishing operations. We have included these services in order to capture a wider array of water transportation vessels.

During our research we also learned of a number of “water taxis,” small vessels that transport passengers on either a fixed-route or non-fixed route basis for short-distance trips. Since water taxis can provide commuter and/or non-commuter services, we have integrated them into the appropriate classifications wherever relevant. Table 1 provides a summary of the commuter and non-commuter water transit services in California organized by region listed at the left. Note that the table is as complete as possible through November 2012, considering that a small number of operators were not forthcoming with needed data.

Table 1. Commuter and Non-Commuter Water Transit Services by Region

	Type	Total Number of Operators	Total Number of Vessels	Total Nautical Miles	Ownership (OW) / Operator Type (OP)	
					Total Number of Private	Total Number of Public
SF Bay Area (incl. Santa Cruz)*	Commuter	4	28	188.25	OW: 2 / OP: 2	OW: 2 / OP: 2
	Non-commuter	3	15	46.25	OW: 2 / OP: 3	OW: 1 / OP: 0
	Water taxi	4	8**	N/A	OW: 3 / OP: 3	OW: 1 / OP: 1
Sacramento/Delta	Commuter	2	4	1.16	OW: 0 / OP: 1	OW: 2 / OP: 1
	Non-commuter	N/A	N/A	N/A	N/A	N/A
	Water taxi	N/A	N/A	N/A	N/A	N/A
Santa Barbara	Commuter	N/A	N/A	N/A	N/A	N/A
	Non-commuter	1	3	88.0	OW: 1 / OP: 1	OW: 0 / OP: 0
	Water taxi	3	2**	N/A	OW: 2 / OP: 2	OW: 0 / OP: 0
Los Angeles / Orange County*	Commuter	3	12	208.17	OW: 2 / OP: 2	OW: 0 / OP: 0
	Non-commuter	1	1	28.0	OW: 1 / OP: 1	OW: 1 / OP: 1
	Water taxi	2	4**	N/A	OW: 1 / OP: 0	OW: 0 / OP: 1
San Diego Area*	Commuter	1	4	10.0	OW: 1 / OP: 1	OW: 0 / OP: 0
	Non-commuter	1	4	10.0	OW: 1 / OP: 1	OW: 0 / OP: 0
	Water taxi	1	1	N/A	OW: 1 / OP: 1	OW: 0 / OP: 0

* Some operators in this region provide both “commuter” and “non-commuter” services and are thus double-counted; see individual operator tables for more detail.

** Some operators in this region did not respond to repeated requests for information; table entries reflect data available at the operator’s website.

Section One of this report presents an overview of the research methodology.

Section Two presents tabular summaries and detailed route maps of the 22 commuter and non-commuter “Point A to Point B” water transportation services in California, organized by region. Water taxis are also included in this section. This section constitutes the 2012 Census of Water Transit Services that we set out to produce for this report.

Since our charge was to conduct an exhaustive search for all water transportation services in California, Section Three provides a listing of 37 additional operators that we discovered during the development of the census; these services are classified as “circular”/recreational in nature. Our research concluded that these services are not directly relevant to the scope and impetus for this census since they provide lake cruises, charter yachts, whale watching adventures, sport fishing, and bay-based “cruises to nowhere.” Also, none of these operators appear to offer fixed-route service, and all are almost exclusively recreational in nature; therefore, they did not meet the threshold for essential water transportation for residents and commuters of our state. However, future researchers might wish to reference this list in terms of possibilities for providing water transportation in cases of major regional emergencies.

The spreadsheet of information we developed can be integrated into Caltrans’ geographic information system (GIS) since it includes the latitude/longitude coordinates of all commuter and non-commuter water transportation terminal locations; the route lines are also available in GIS format.

Additionally, in a pocket at the back of this report is a foldable poster map of all of the California water transit operators documented in Section Two.

I. RESEARCH METHODOLOGY

Our first task was to develop a complete listing of all ferry operators in the state. To identify an initial set of operator data, we searched the following websites: ferry-service.findthedata.org, angelislandferry.com, balboaislandferry.com, sdhe.com, google.com, takethewave.com, baycrossings.org, sanfranciscobayferry.com, watertransit.org, boatharbors.com and baylinkferry.com. Additionally, a number of website search terms proved useful: “Ferries in California,” “Association of California Ferry Operators,” “(County name) Cruises,” “(County name) Ferry Service,” “Water Taxi Services California,” and “Water Taxi Company.”

The initial research revealed that water transit vessels in California provide services beyond what is commonly considered to be traditional “ferry” operations, and this necessitated the creation of three primary classifications of water transit service: commuter, non-commuter, and recreational/“circular.” Broadly speaking:

- **Commuter services** are commonly understood as “ferries” and provide essential, “point A to point B” transportation such as traditional vehicle or passenger ferries.
- **Non-commuter services** also provide “point A to point B” operations but provide a variety of connecting services beyond those that are vehicle and passenger commuting purposes.
- **Recreational/“circular” services** begin and end at the same terminal and include services such as dinner cruises or sport fishing operations. We have included these services in order to capture a wider array of water transportation vessels.

During our research we also learned of a number of “water taxis,” small vessels that transport passengers on either a fixed-route or non-fixed route basis for short-distance trips. Since water taxis can provide commuter and/or non-commuter services, we have integrated them into the appropriate classifications when relevant.

With the three-tiered classification scheme in place, we contacted each of the 22 water transit operators in the state of California by telephone. Most of the operators gladly participated in this census, although a few did not return our calls despite many repeated efforts and numerous e-mail follow-ups. We have noted missing information where appropriate. Wherever such roadblocks presented themselves, we gathered current information from operator websites to the best of our ability. For each of the 22 unique operators, we collected the information listed below. A few of these variables were not relevant to particular operators (e.g., capacity for automobiles is not relevant to “cruises to nowhere”) so those were omitted wherever appropriate.

- Type of service (commuter, non-commuter, water taxi)
- Operates within (ocean, bay, river)
- Total number of segments

- Segment name (e.g., “Angel Island to Tiburon”) and length in nautical miles
- Advertised fares and regulatory authority
- Hours of operation
- Number of vessels
- Seating capacity
- Capacity for automobiles and bicycles
- Passenger boarding statistics and daily trip counts
- Projections for future service expansion, if provided
- Ownership and operator type (public or private)
- Name and contact information for chief executive officer
- Primary contact (name, email address and/or telephone number)
- Website
- Address and latitude/longitude coordinates of terminal locations

Note that the information in this report is as complete as possible through November 2012, considering that a small number of operators were not forthcoming with needed data.

II. 2012 CENSUS OF COMMUTER AND NON-COMMUTER WATER TRANSPORTATION SERVICES IN CALIFORNIA

This section of the report presents the results of the census of 22 water transportation providers conducted in October and November of 2012. It is organized by the five geographic regions listed in Table 1 proceeding north to south, starting with the San Francisco Bay Area, then proceeding to the Sacramento/Delta region, the Santa Barbara region, Los Angeles and Orange County, and the San Diego area.

Each regional section begins with a map that presents an overview of the services in that region. Following this overview, subsequent pages present details for each water transit operator, coupled with a detailed map that shows terminal locations and routes. Red points and lines on the maps in this section indicate primary water transit services and yellow points and lines indicate smaller, short-distance water taxis. The poster map in the pocket at the back of this report presents all water transit services statewide that qualify for our definition of commuter and non-commuter.

SAN FRANCISCO BAY AREA WATER TRANSIT SERVICES

There are a total of nine water transit providers in the San Francisco Bay Area:

- Alcatraz Cruises
- Angel Island – Tiburon Ferry Company
- Blue and Gold Fleet
- Golden Gate Bridge Highway and Transportation District
- Water Emergency Transportation Authority
- Tideline Marine Group
- San Francisco Water Taxi Company
- Westar Marine Services
- Santa Cruz Port District, Harbor Water Taxi

These providers, two of which offer both commuter and non-commuter services (Angel Island-Tiburon Ferry Co. and Blue and Gold Fleet), are summarized in Table 3.

Table 2. Summary of Commuter and Non-Commuter Water Transit Services in the San Francisco Bay Area (incl. Santa Cruz)*

Type	Total Number of Operators*	Total Number of Vessels	Total Nautical Miles	Ownership (OW) / Operator Type (OP)	
				Total Number of Private	Total Number of Public
Commuter	4	28	188.25	OW: 2 / OP: 2	OW: 2 / OP: 2
Non-commuter	3	15	46.25	OW: 2 / OP: 3	OW: 1 / OP: 0
Water taxi	4	8**	N/A	OW: 3 / OP: 3	OW: 1 / OP: 1

* Two operators in this region provide both “commuter” and “non-commuter” services; see individual operator tables for more detail and thus are double-counted. There are nine unique operators in the region.

** Some operators in this region did not respond to repeated requests for information; table entries reflect data available at the operator’s website.

Figure 1 presents an overview of water transit services operating in the San Francisco Bay Area. This regional section concludes with water taxi services in Santa Cruz, although those services are not reflected in Figure 1 in order to maintain a detailed geographic focus; however, the poster map in the back pocket of this report does show the Santa Cruz area services.

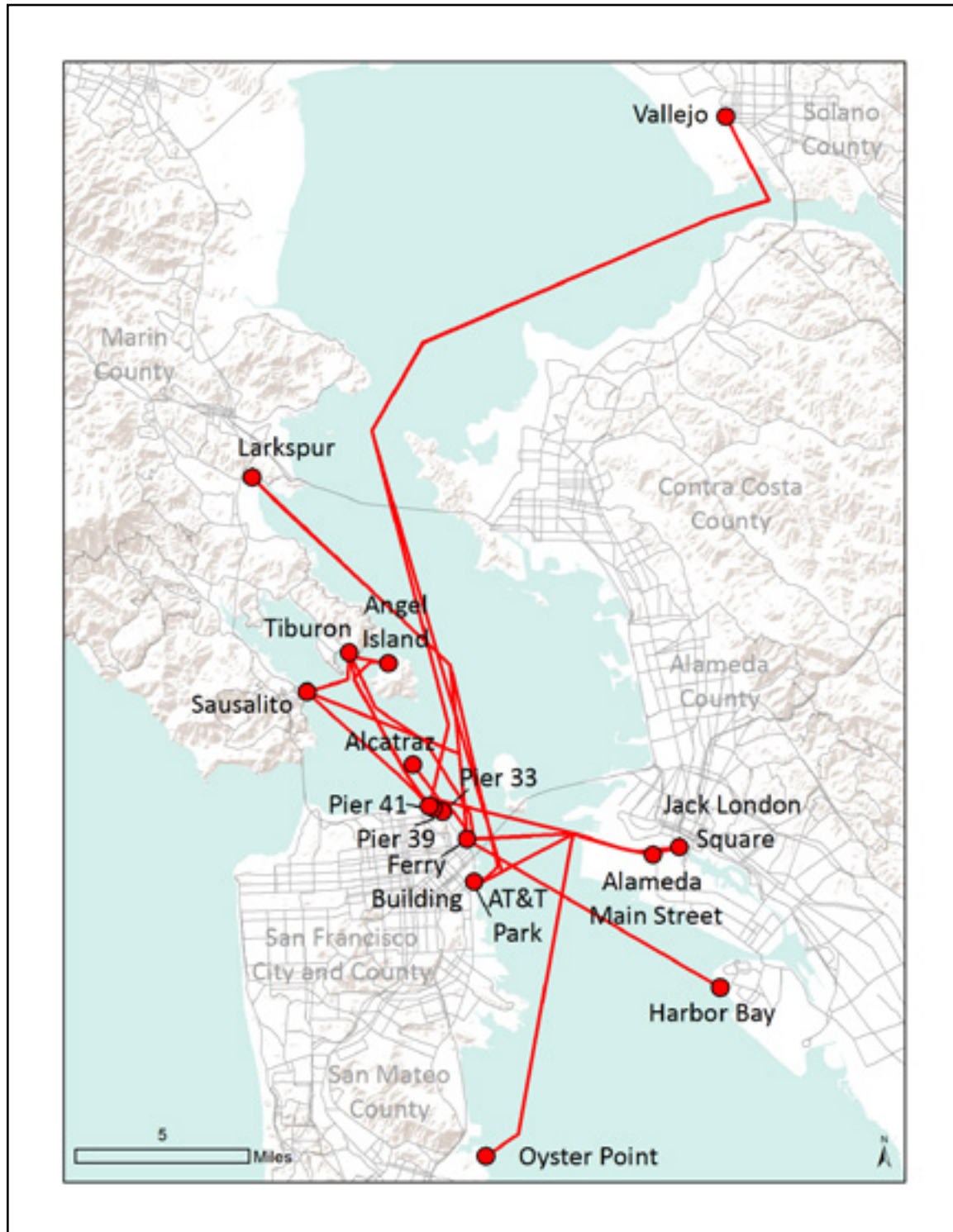


Figure 1. Overview of San Francisco Bay Area Water Transit Services

Table 3. Alcatraz Cruises

Type	Non-commuter
Operates within	Bay
Total number of segments	1
Segment names and length (nautical miles)	Pier 33 – Alcatraz Island (1.00 nmi)
Advertised fares	Adults \$28; Senior \$26.25
Regulated by	National Park Service
Hours of operation	Monday – Sunday, 8:45 am – 7:15 pm
Total number of vessels	5
Seating capacity by vessel	159-699
Car capacity by vessel	N/A
Bike capacity by vessel	N/A
Boarding statistics (2011)	Served 1.3 million passengers; 5,200 round trips; 15-20 average daily trips
Plans for future expansion	Converting current vessels to hybrid vessels; may add boats
Ownership type	Public
Operator type	Private
CEO	Terry Macrae 415-788-8866
Contact	Lorelai Octavo 415-438-8320 x2343 loctavo@alcatrazcruises.com
Website	http://alcatrazcruises.com

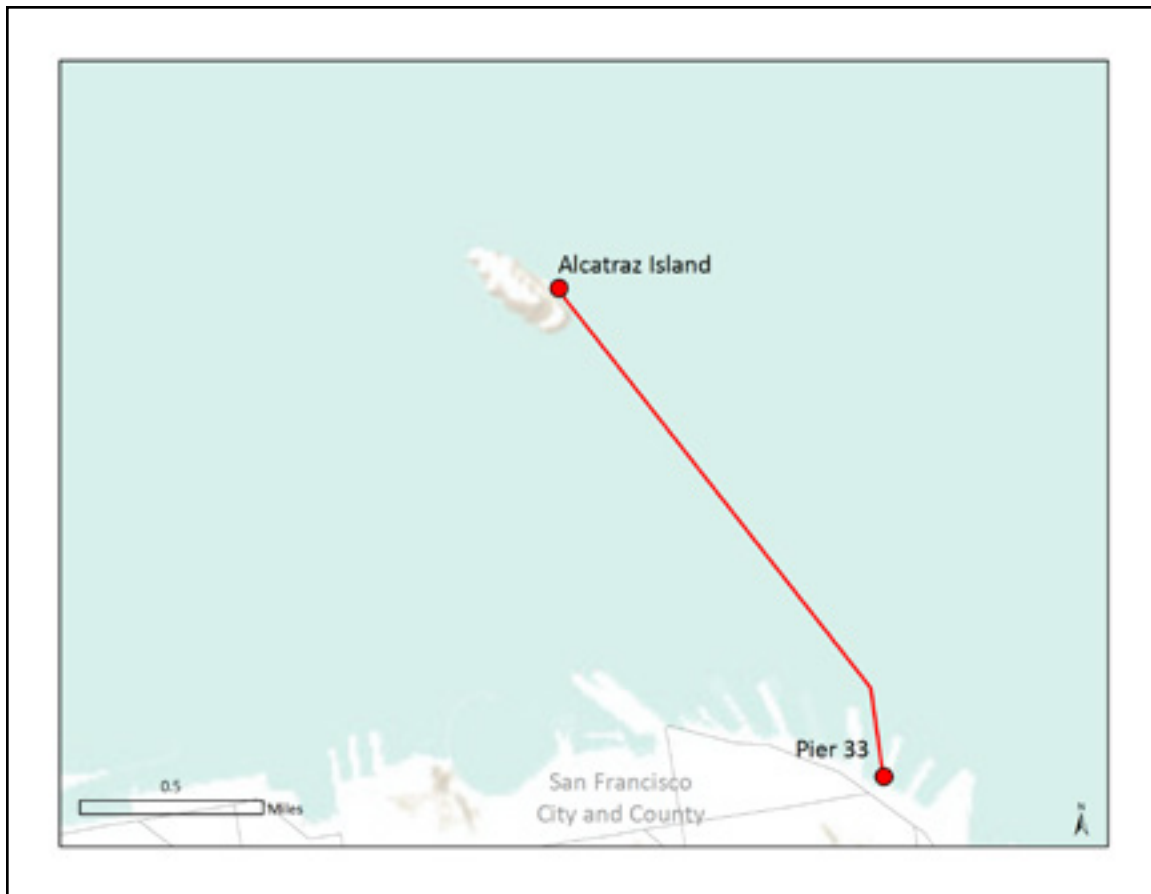


Figure 2. Alcatraz Cruises

Table 4. Angel Island – Tiburon Ferry Company

Type	Commuter & non-commuter
Operates within	Bay
Total number of segments	1
Segment names and length (nautical miles)	Tiburon – Angel Island (1.00 nmi)
Advertised fares	Adults \$13.50; Child \$11.50; Small Child \$3.50; Toddler FREE
Regulated by	California Public Utilities
Hours of operation	Monday – Sunday 10:00 am – 4:00 pm
Total number of vessels	3
Seating capacity by vessel	98-342
Car capacity by vessel	N/A
Bike capacity by vessel	30-100
Boarding statistics (2011)	Served 65,000 passengers; 5 average daily trips
Plans for future expansion	Operator not sure yet
Ownership type	Private
Operator type	Private
CEO	Maggie McDonough 415-435-2131
Contact	Maggie McDonough 415-435-2131
Website	http://angelislandferry.com



Figure 3. Angel Island – Tiburon Ferry Company

Table 5. Blue and Gold Fleet

Type	Commuter & non-commuter
Operates within	Bay
Total number of segments	10
Segment names & length (nautical miles)	Main Street, Alameda – Jack London Square, Oakland (0.8 nmi)* Angel Island – Pier 41 (3.75 nmi)* Sausalito – Pier 41 (4.2 nmi) Tiburon – Pier 41 (3.9 nmi) Main Street, Alameda – Pier 41 (8.4 nmi) Tiburon – Sausalito (1.6 nmi) Ferry Building – Tiburon (5.60 nmi) Ferry Building – Jack London Square, Oakland (7.2 nmi)* Ferry Building – Pier 41 (2.0 nmi)* Alameda – Jack London Square - AT&T Park** (6.8 nmi)
Advertised fares	Adults \$6.50-10.50; Child \$3.50-6.25; Senior \$3.10-6.25
Regulated by	California Public Utilities
Hours of operation	Monday – Friday 6:05 am - 8:45 pm
Total number of vessels	7 (+11 for WETA)
Seating capacity by vessel	300-750
Car capacity by vessel	N/A
Bike capacity by vessel	50-100
Boarding statistics (2011)	Served 2.5 million passengers
Plans for future expansion	No
Ownership type	Private
Operator type	Private
CEO	Carolyn Horgan Carolyn@blueandgoldfleet.com 415-705-8207
Contact	Patrick Murphy 415-705-8248
Website	http://blueandgoldfleet.com

Note: The Water Emergency Transportation Authority (WETA) recently assumed service for the City of Alameda Ferry, Harbor Bay, and Vallejo Baylink Ferry, although Blue and Gold Fleet provides the daily operation of these services. See Table 7 and Figure 6 for more information about WETA services.

* Segment within larger route; high frequency use.

** Operates only on Game Days for AT&T Park.

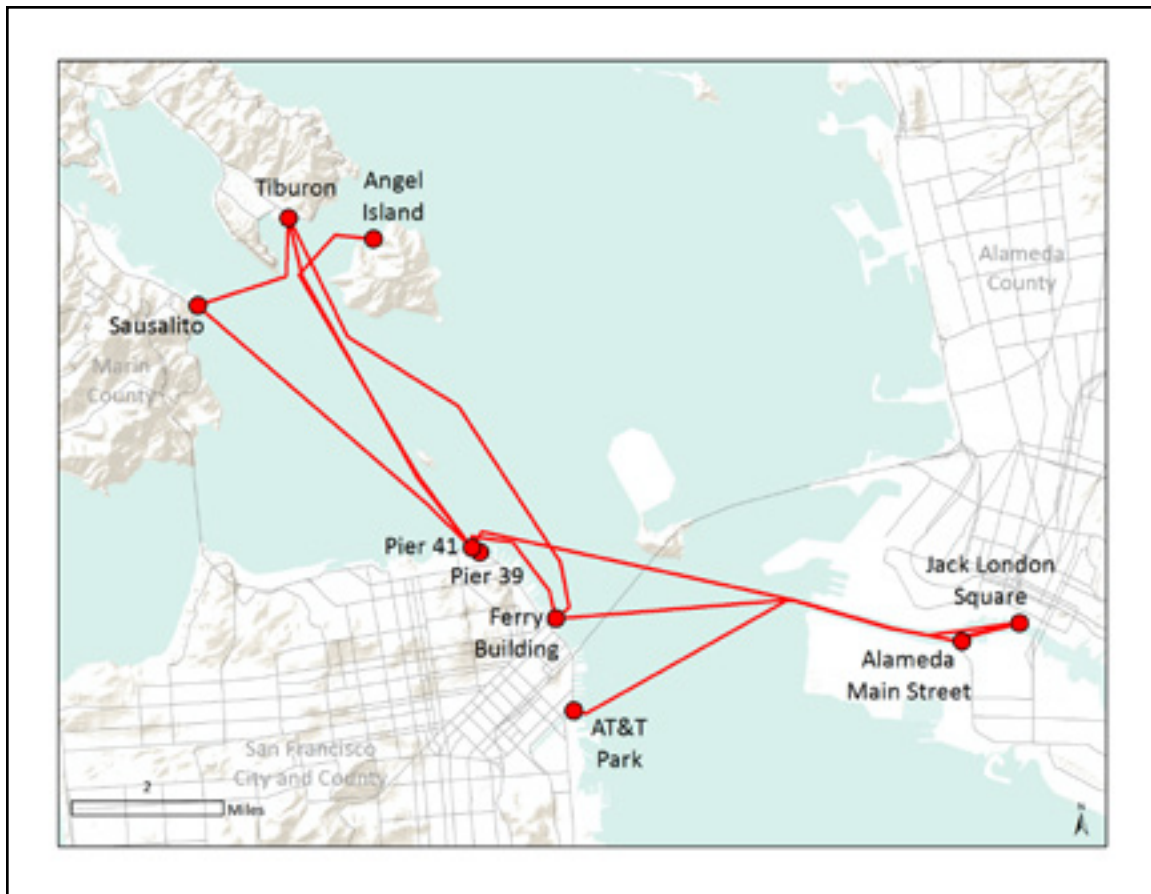


Figure 4. Blue and Gold Fleet

Table 6. Golden Gate Bridge Highway and Transportation District

Type	Commuter
Operates within	Bay
Total number of segments	3
Segment names & length (nautical miles)	Ferry Building – Larkspur (15.00 nmi) Ferry Building – Sausalito (6.00 nmi) Larkspur – AT&T Park* (14.60 nmi)
Advertised fares	Adults \$9.00; Senior \$4.50; Child FREE
Regulated by	California Public Utilities
Hours of operation	Weekdays 5:50 am - 10:05 pm; Weekends 9:40 am - 8:10 pm
Total number of vessels	7
Seating capacity by vessel	399-750
Car capacity by vessel	N/A
Bike capacity by vessel	20-180
Boarding statistics (2011)	Served 65,000 passengers; 60 average daily trips
Plans for future expansion	No firm plans but actively interested in expanding service
Ownership type	Public
Operator type	Public
CEO	Denis Mulligan
Contact	Colin McDermott 415-925-5576 cmcdermott@goldengate.org
Website	http://Goldengateferry.org

* Operates only on Game Days for AT&T Park.

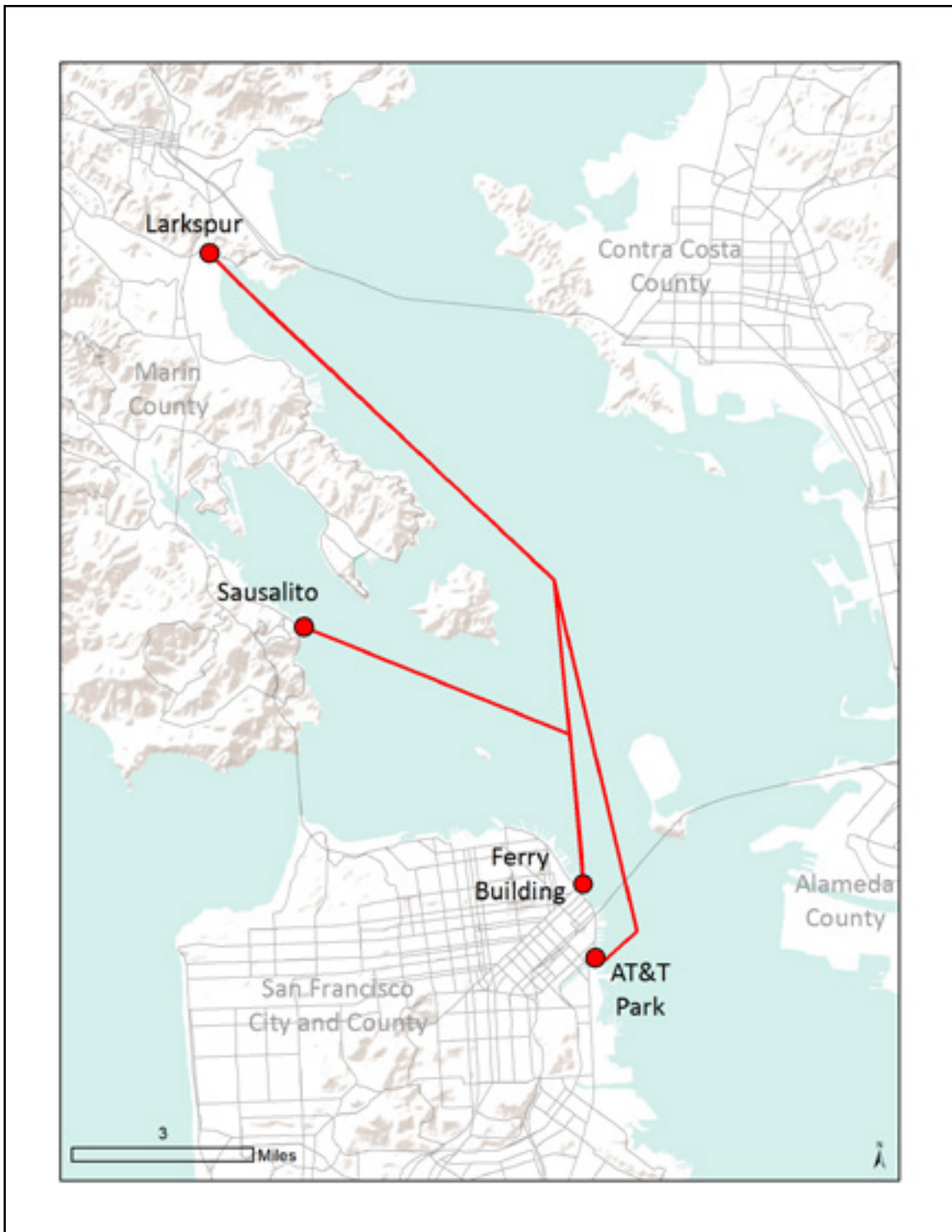


Figure 5. Golden Gate Bridge Highway and Transportation District

Table 7. Water Emergency Transportation Authority (WETA)

Type	Commuter
Operates within	Bay
Total number of segments	7
Segment names & length (nautical miles)	Ferry Building – Jack London Square (8.5 nmi) Ferry Building – Main Street, Alameda (8.5 nmi) Vallejo – Pier 41 (24.00 nmi) Vallejo – Ferry Building (24.00 nmi) Vallejo – AT&T Park** (24.00 nmi) Ferry Building – Harbor Bay (7.5 nmi) Main Street, Alameda – Oyster Point (10.9 nmi)
Advertised fares (one-way)	Adult \$6.25; Youth \$3.50; Senior \$3.10; Child FREE
Regulated by	Self-regulated
Hours of operation	Weekdays 5:30 am - 5:45 pm; Weekends 8:30 am - 7:30 pm
Total number of vessels	11
Seating capacity by vessel	149-400
Car capacity by vessel	N/A
Bike capacity by vessel	15-30
Boarding statistics (2011)	13-30 average daily trips
Plans for future expansion	In 10 years, expand routes to Richmond, Berkeley, Treasure Island
Ownership type	Public
Operator type	Public
CEO	Nina Rannells rannells@watertransit.org
Contact	Keith Stahnke stahnke@watertransit.org 415-364-3192
Website	http://watertransit.org

Note: Took over City of Alameda Ferry, Harbor Bay, Vallejo Baylink Ferry; Operated by Blue & Gold Fleet.

** Operates only on Game Days for AT&T Park.

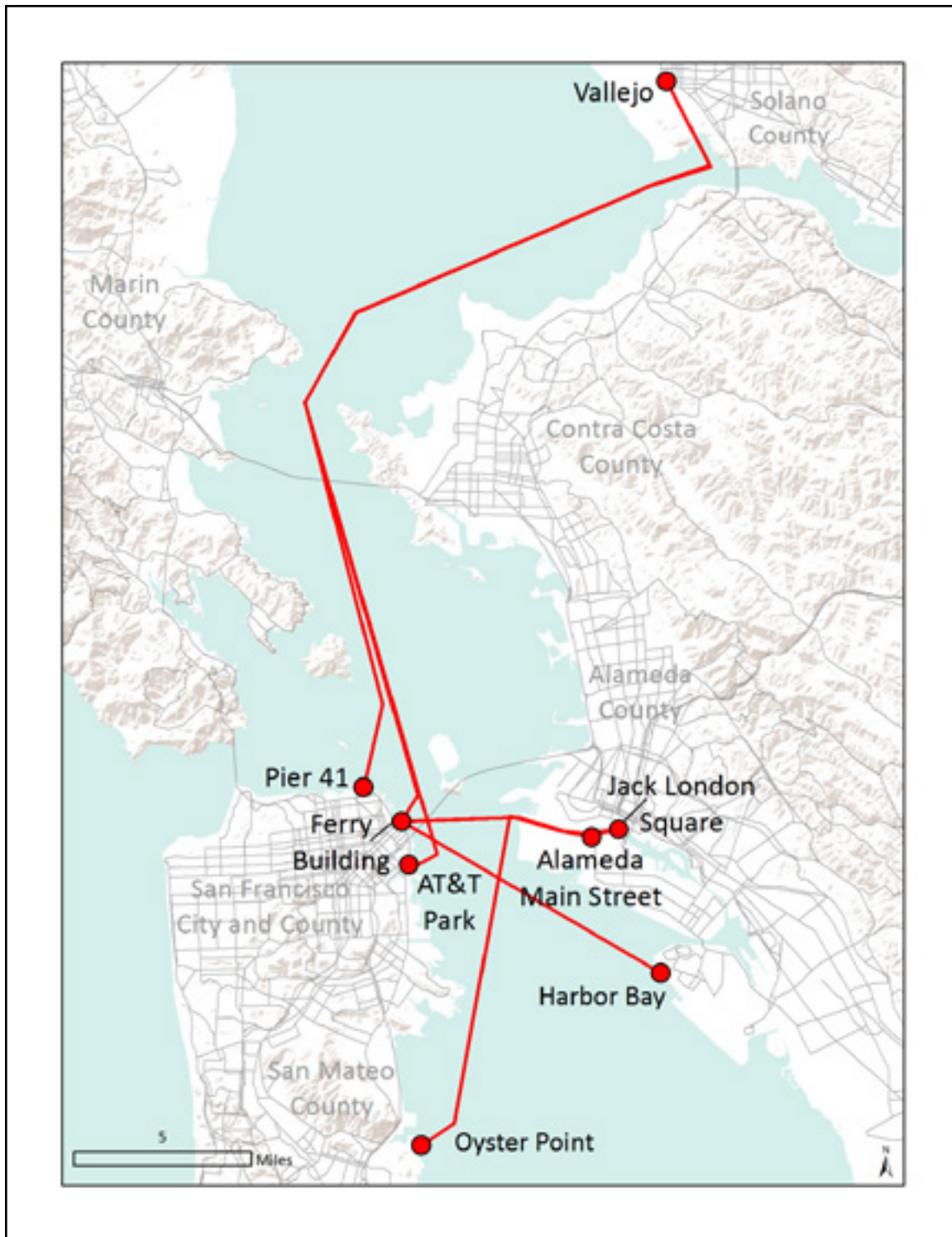


Figure 6. Water Emergency Transportation Authority (WETA)

Table 8. Tideline Marine Group*

Type	Water taxi
Operates within	Bay
Port locations	Pier 50 (SF); Berth 9 (Oakland)
Advertised fares	N/A
Regulated by	N/A
Hours of operation	N/A
Total number of vessels	N/A
Seating capacity by vessel	N/A
Boarding statistics	N/A
Plans for future expansion	N/A
Ownership type	Private
Operator type	Private
CEO	Ryan Craves 415-339-0196
Contact	Ryan Craves 415-339-0196
Website	http://Tidelinesf.com/services/water-taxi-service/

* Operator did not respond to repeated requests for information; table entries reflect data available at the operator's website.



Figure 7. Tideline Marine Group

Table 9. San Francisco Water Taxi Co.*

Type	Water taxi
Operates within	Bay
Port locations	Sausalito; Angel Island; Fort Baker; Alcatraz; Pier 41; Pier 39; AT&T Park; Treasure Island
Advertised fares	N/A
Regulated by	N/A
Hours of operation	N/A
Total number of vessels	N/A
Seating capacity by vessel	12
Boarding statistics	N/A
Plans for future expansion	N/A
Ownership type	Private
Operator type	Private
CEO	Dave Thomas
Contact	N/A
Website	N/A

* Operator did not respond to repeated requests for information; table entries reflect data available at the operator's website.

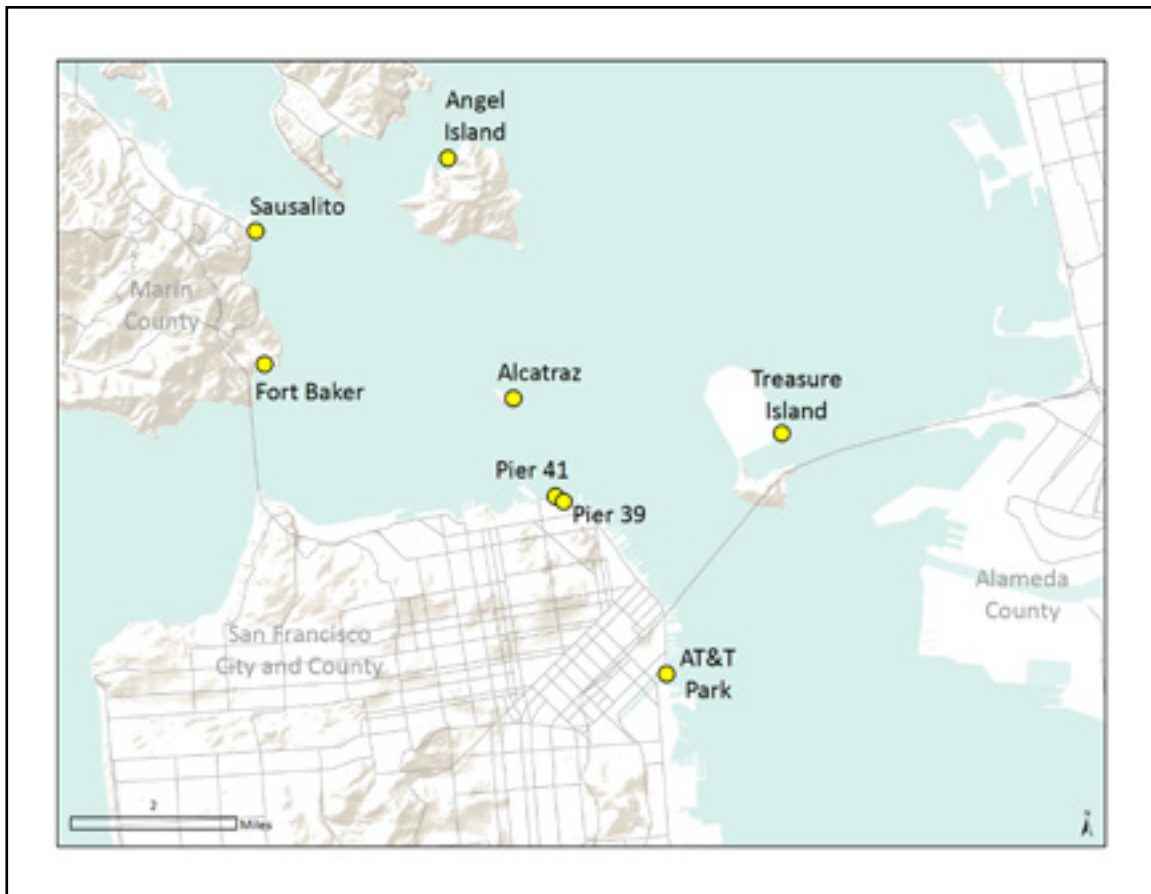


Figure 8. San Francisco Water Taxi Co.

Table 10. Westar Marine Services

Type	Water taxi
Operates within	Ocean/Bay
Port locations	Pier 50 (SF); Berth 9 (Oakland); Angel Island; Alcatraz; Jack London Square
Advertised fares	\$315 per hour up to 49 passengers
Regulated by	California Public Utilities
Hours of operation	24/7/365
Total number of vessels	6
Seating capacity by vessel	28-49
Boarding statistics (2011)	15 average daily trips
Plans for future expansion	No
Ownership type	Private
Operator type	Private
CEO	Mary McMillan 415-495-3191
Contact	Rich Smith 415-495-3191
Website	http://Westarmarineservices.com/watertaxilist.htm

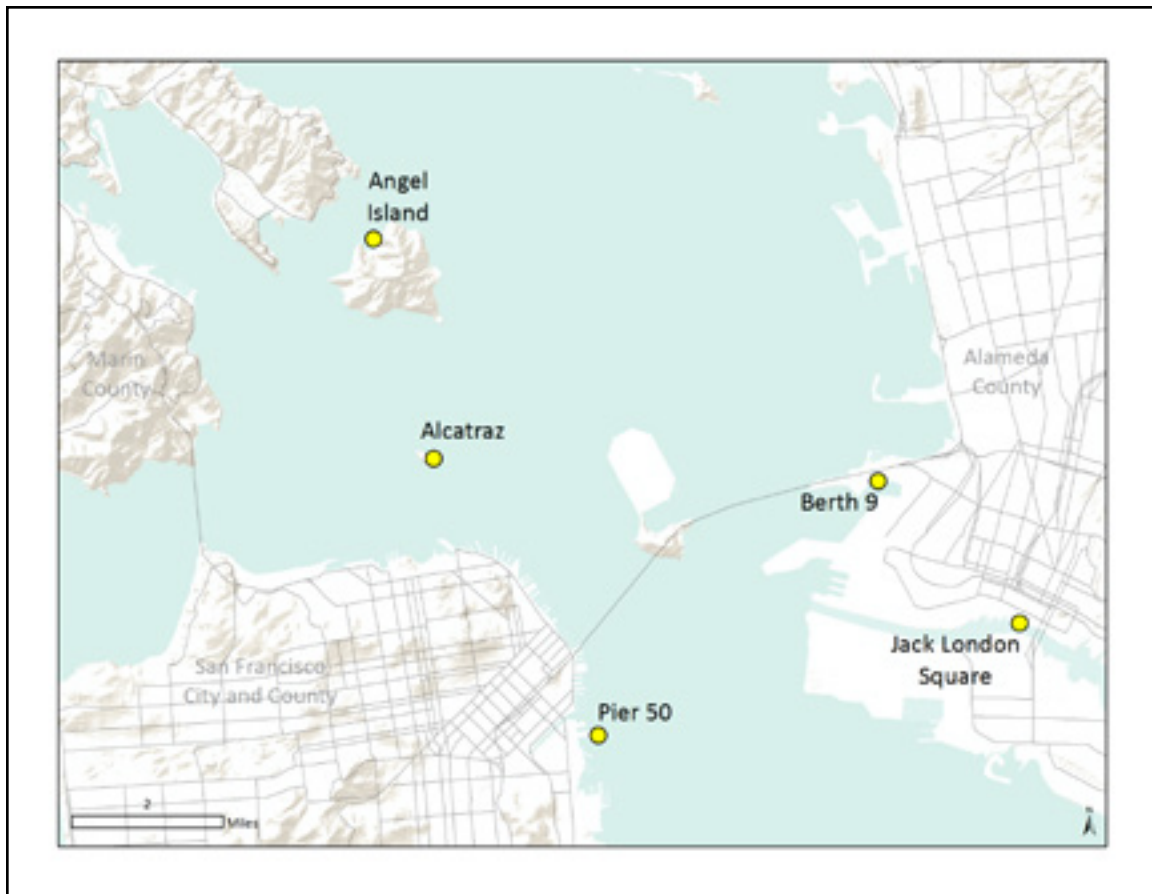


Figure 9. Westar Marine Services

Table 11. Santa Cruz Port District, Harbor Water Taxi

Type	Water taxi
Operates within	Bay
Port locations	Santa Cruz Harbor
Advertised fares	Free
Regulated by	Port District
Hours of operation	Memorial Day – Labor Day: Weekends 11 am - 5 pm
Total number of vessels	2
Seating capacity by vessel	6-20
Boarding statistics (2011)	Served 10,000 passengers; 20 average daily trips
Plans for future expansion	No
Ownership type	Public
Operator type	Public
CEO	Chuck Izenstark 831-475-6161 x20 cizenstark@santacruzharbor.org
Contact	Chuck Izenstark 831-475-6161 x20 cizenstark@santacruzharbor.org
Website	http://santacruzharbor.org/parkingWaterTaxi.html



Figure 10. Santa Cruz Port District, Harbor Water Taxi

SACRAMENTO/DELTA AREA WATER TRANSIT SERVICES

There are a total of two water transit providers in the Sacramento/Delta area:

- Caltrans Water Transit Services
- San Joaquin County Dept. of Public Works

These providers are summarized in Table 12.

Table 12. Summary of Commuter and Non-Commuter Water Transit Services in the Sacramento/Delta Area

Type	Total Number of Operators	Total Number of Vessels	Total Nautical Miles	Ownership (OW) / Operator Type (OP)	
				Total Number of Private	Total Number of Public
Commuter	2	4	1.16	OW: 0 / OP: 1	OW: 2 / OP: 1
Non-commuter	N/A	N/A	N/A	N/A	N/A
Water taxi	N/A	N/A	N/A	N/A	N/A

Figure 11 presents an overview of water transit services serving the Sacramento/Delta area. These services are what might be called “short-hops” between the various islands and along the many rivers and sloughs in this part of the state.

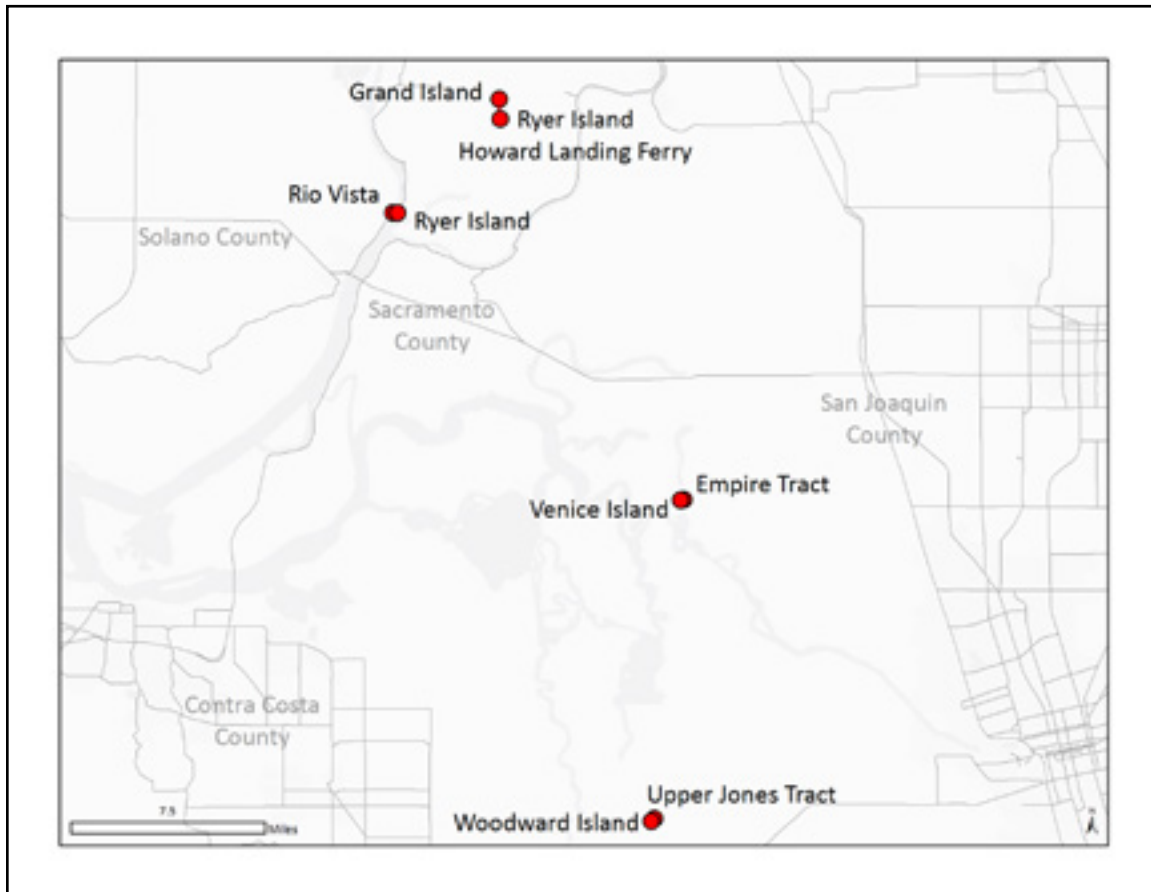


Figure 11. Overview of Sacramento/Delta Area Water Transit Services

Table 13. Caltrans Water Transit Services

Type	Commuter
Operates within	River
Total number of segments	2
Segment names and length (nautical miles)	Grand Island – Howard Landing Ferry, Ryer Island (0.13 nmi) Rio Vista – Ryer Island (0.8 nmi)
Advertised fares	Free
Regulated by	N/A
Hours of operation	24/7
Total number of vessels	2
Seating capacity by vessel	N/A
Car capacity by vessel	6-8
Bike capacity by vessel	No max capacity
Boarding statistics (2011)	200 average daily trips
Plans for future expansion	No
Ownership type	Public
Operator type	Public
CEO	Dijan Sartipi 510-286-4444
Contact	Vince Jacala 510-286-5206
Website	http://dot.ca.gov/dist4/deltaferries/index.html

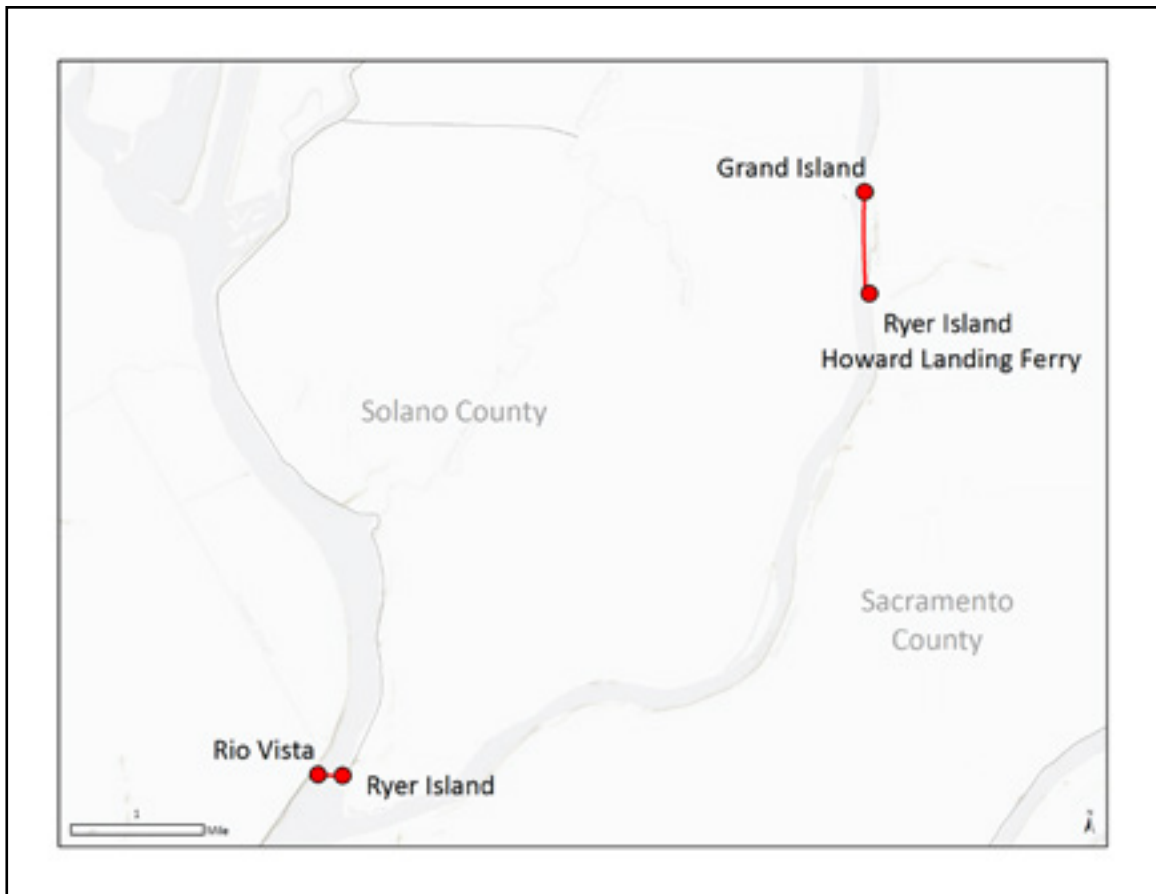


Figure 12. Caltrans Water Transit Services

Table 14. San Joaquin County Department of Public Works

Type	Commuter
Operates within	River
Total number of segments	2
Segment names & length (nautical miles)	Empire Tract – Venice Island (0.12 nmi) Upper Jones Tract – Woodward Island (0.11 nmi)
Advertised fares	FREE
Regulated by	N/A
Hours of operation	Monday – Sunday 6:30 am – 5 pm & on-call
Total number of vessels	2
Seating capacity by vessel	N/A
Car capacity by vessel	Trucks only
Bike capacity by vessel	N/A
Boarding statistics	None
Plans for future expansion	Remove 1 vessel, adding bridge
Ownership type	Public
Operator type	Private
CEO	Mark Connally 805-642-1393 mc@islandpackers.com
Contact	Dan McCann 209-468-3106 dmccann@sjgov.org
Website	http://Ferry-service.findthedata.org/I/215/Upper-Jones-Tract-Stockton-CA-Woodward-Island-CA

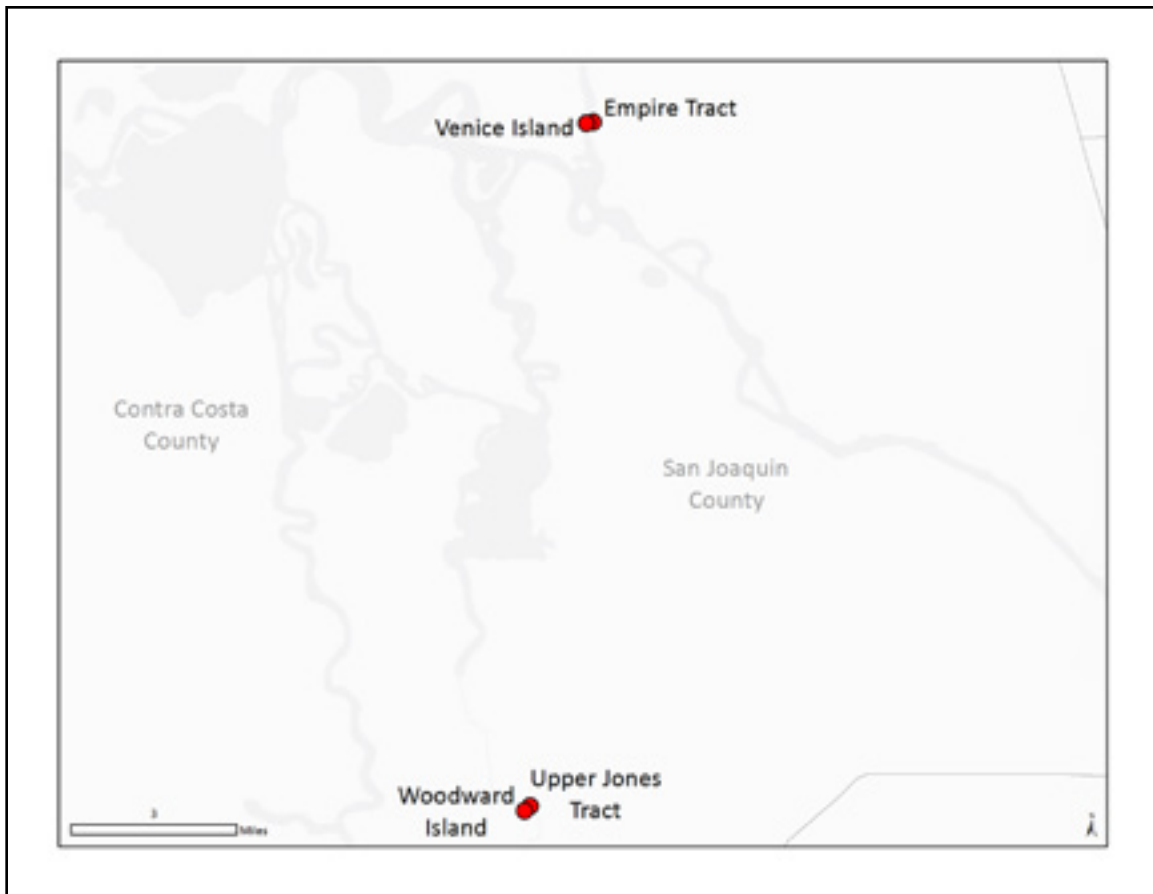


Figure 13. San Joaquin County Department of Public Works

SANTA BARBARA AREA WATER TRANSIT SERVICES

There are a total of four water transit providers in the Santa Barbara area:

- Island Packers Corporation
- Avila Beach Water Taxi
- Santa Barbara Water Taxi
- Ventura Water Taxi

These providers are summarized in Table 15.

Table 15. Summary of Commuter and Non-Commuter Water Transit Services in the Santa Barbara Area

Type	Total Number of Operators	Total Number of Vessels	Total Nautical Miles	Ownership (OW) / Operator Type (OP)	
				Total Number of Private	Total Number of Public
Commuter	N/A	N/A	N/A	N/A	N/A
Non-commuter	1	3	88.0	OW: 1 / OP: 1	OW: 0 / OP: 0
Water taxi	3	2**	N/A	OW: 2 / OP: 2	OW: 0 / OP: 0

** Some operators in this region did not respond to repeated requests for information; table entries reflect data available at the operator's website.

Figure 14 presents an overview of water transit services serving the Santa Barbara region. Red points and lines on the map indicate primary water transit services and yellow points and lines indicate water taxi terminals. This regional section includes one operator (Avila Beach Water Taxi), although it is not reflected in Figure 14 in the interest of maintaining the detailed geographic focus; however, the poster map in the back pocket of this report does show Avila Beach area services. Avila Beach is situated approximately seventy miles north of the map area shown in Figure 14.

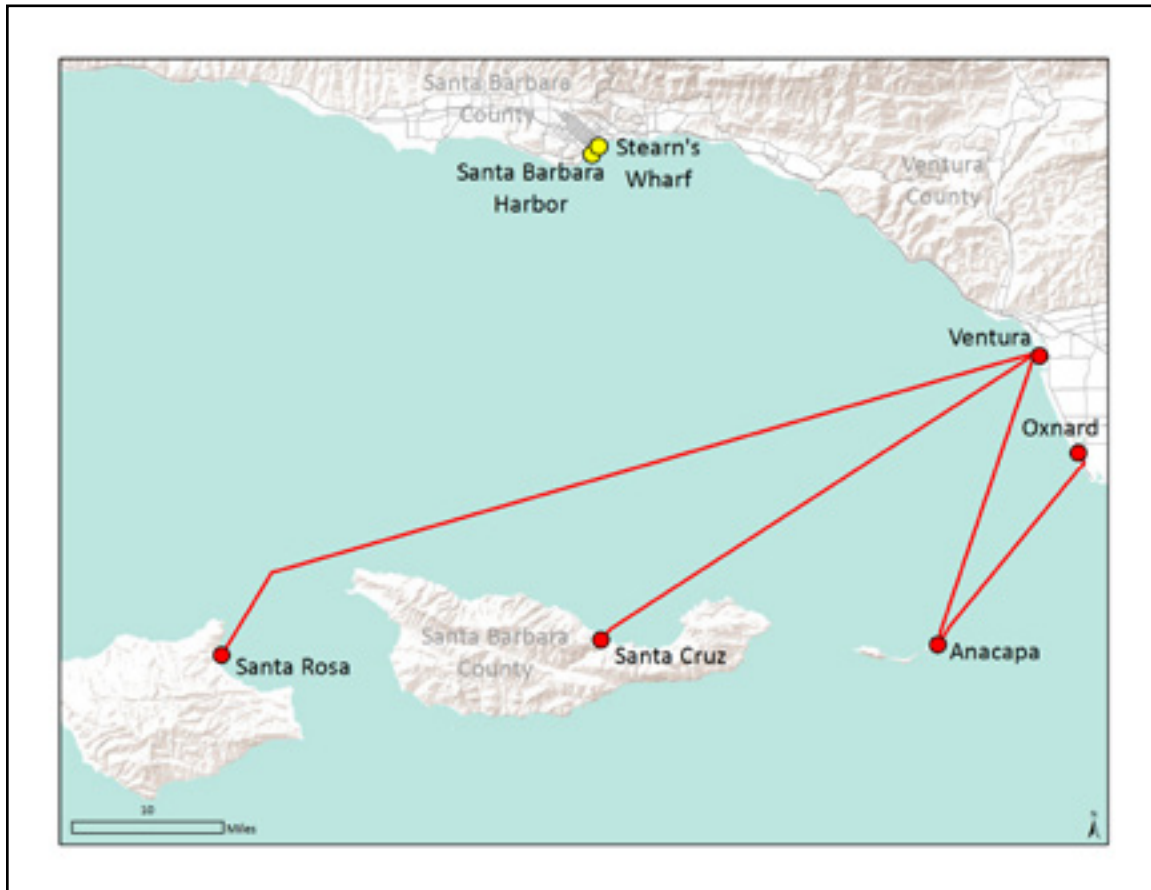


Figure 14. Santa Barbara Area Water Transit Services

Table 16. Island Packers Corporation

Type	Non-commuter
Operates within	Ocean
Total number of segments	4
Segment names & length (nautical miles)	Ventura – Anacapa (17.00 nmi) Ventura – Santa Cruz (21.00 nmi) Ventura – Santa Rosa Island (39.00 nmi) Oxnard – Anacapa (11.00 nmi)
Advertised fares	Adult \$56; Child \$39; Senior \$51; Infant FREE
Regulated by	National Park Service
Hours of operation	Monday – Sunday 9 am-5 pm
Total number of vessels	3
Seating capacity by vessel	80-149
Car capacity by vessel	N/A
Bike capacity by vessel	N/A
Boarding statistics (2011)	Served 67,064 passengers; 1,454 round trips; 10 average daily trips
Plans for future expansion	Add 1-149 passenger vessel by April 2013
Ownership type	Private
Operator type	Private
CEO	Mark Connally 805-642-1393 mc@islandpackers.com
Contact	Alex Brodie 805-642-1391 x311 abrodie@islandpackers.com
Website	http://islandpackers.com

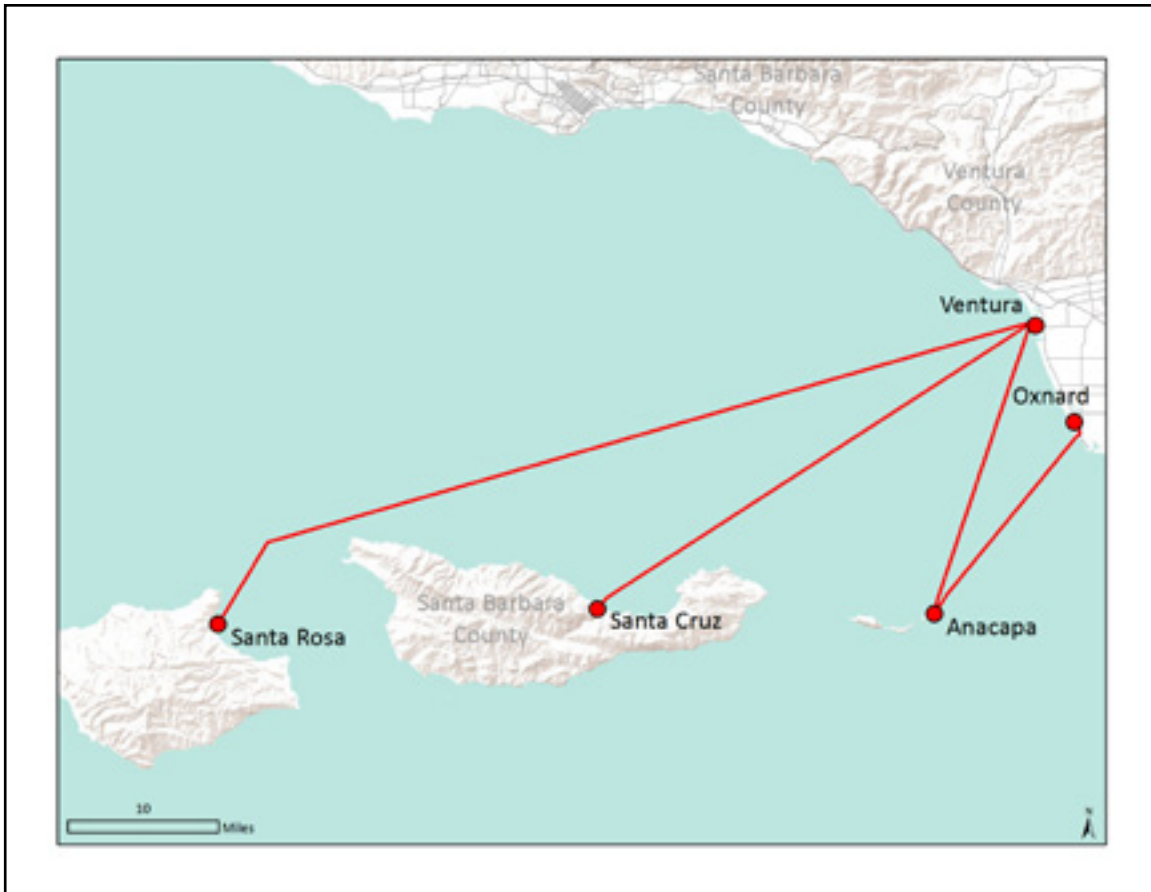


Figure 15. Island Packers Corporation

Table 17. Avila Beach Water Taxi

Type	Water taxi
Operates within	Ocean
Port locations	Public landing of Harford Pier
Advertised fares	FREE or \$18 one-way split between passengers
Regulated by	Self-regulated
Hours of operation	Monday – Sunday 8 am – 4 pm
Total number of vessels	1
Seating capacity by vessel	6
Boarding statistics (2011)	2 average daily trips
Plans for future expansion	Depends on Port of San Luis subsidy and growth of port
Ownership type	Private
Operator type	Private
CEO	Lee Egan 805-703-0397 seaweedxps@gmail.com
Contact	Lee Egan 805-703-0397 seaweedxps@gmail.com
Website	http://avilabeachpier.com/information/water-taxi-boat-yard.html



Figure 16. Avila Beach Water Taxi

Table 18. Santa Barbara Water Taxi

Type	Water taxi
Operates within	Bay
Segment name & length (nautical miles)	Santa Barbara – Stearn’s Wharf (0.75 nmi)
Advertised fares	Adult \$8; Child \$2
Regulated by	Self-regulated
Hours of operation	Fridays 1:30 pm - 3:30 pm; Weekends 12 pm - 5 pm
Total number of vessels	1
Seating capacity by vessel	21
Boarding statistics (2011)	Served 300,00 passengers in 9 years; 24 average daily trips
Plans for future expansion	Possible service extension to Newport Beach
Ownership type	Private
Operator type	Private
CEO	Denis Mulligan
Contact	Fred Hershman 888-316-9363 fred@celebrationsantabarbara.com
Website	http://sbwatertaxi.com



Figure 17. Santa Barbara Water Taxi

Table 19. Ventura Water Taxi*

Type	Water taxi
Operates within	Bay
Port locations	Ventura Boat Rentals Dock; Marina Park Dock; National Parks Visitor's Center Dock G
Advertised fares	\$2
Regulated by	N/A
Hours of operation	Memorial Day – Labor Day: Weekends 11 am - 7 pm
Total number of vessels	N/A
Seating capacity by vessel	N/A
Boarding statistics	N/A
Plans for future expansion	N/A
Ownership type	N/A
Operator type	N/A
CEO	N/A
Contact	N/A
Website	http://venturaboatrentals.com/VenturaWaterTaxi.htm

* Operator did not respond to repeated requests for information; table entries reflect data available at the operator's website.



Figure 18. Ventura Water Taxi

LOS ANGELES/ORANGE COUNTY AREA WATER TRANSIT SERVICES

There are a total of five water transit providers in the Los Angeles/Orange County area:

- Balboa Island Ferry
- Catalina Express
- Long Beach Transit
- Catalina Flyer
- Marina Del Rey Waterbus

These providers, some of which offer both commuter and non-commuter services, are summarized in Table 20.

Table 20. Summary of Commuter and Non-Commuter Water Transit Services in the Los Angeles/Orange County Area

Type	Total Number of Operators*	Total Number of Vessels	Total Nautical Miles	Ownership (OW) / Operator Type (OP)	
				Total Number of Private	Total Number Public
Commuter	3	12	208.17	OW: 2 / OP: 2	OW: 0 / OP: 0
Non-commuter	1	1	28.0	OW: 1 / OP: 1	OW: 1 / OP: 1
Water taxi	2	4**	N/A	OW: 1 / OP: 0	OW: 0 / OP: 1

* Some operators in this region provide both “commuter” and “non-commuter” services and are thus double-counted; see individual operator tables for more detail.

** Some operators in this region did not respond to repeated requests for information; table entries reflect data available at the operator’s website.

Figure 19 presents an overview of water transit services in the southern Los Angeles County and Long Beach areas as well as northern Orange County and westward to Catalina Island. Red points and lines on the map indicate primary water transit services and yellow points and lines indicate water taxi services.

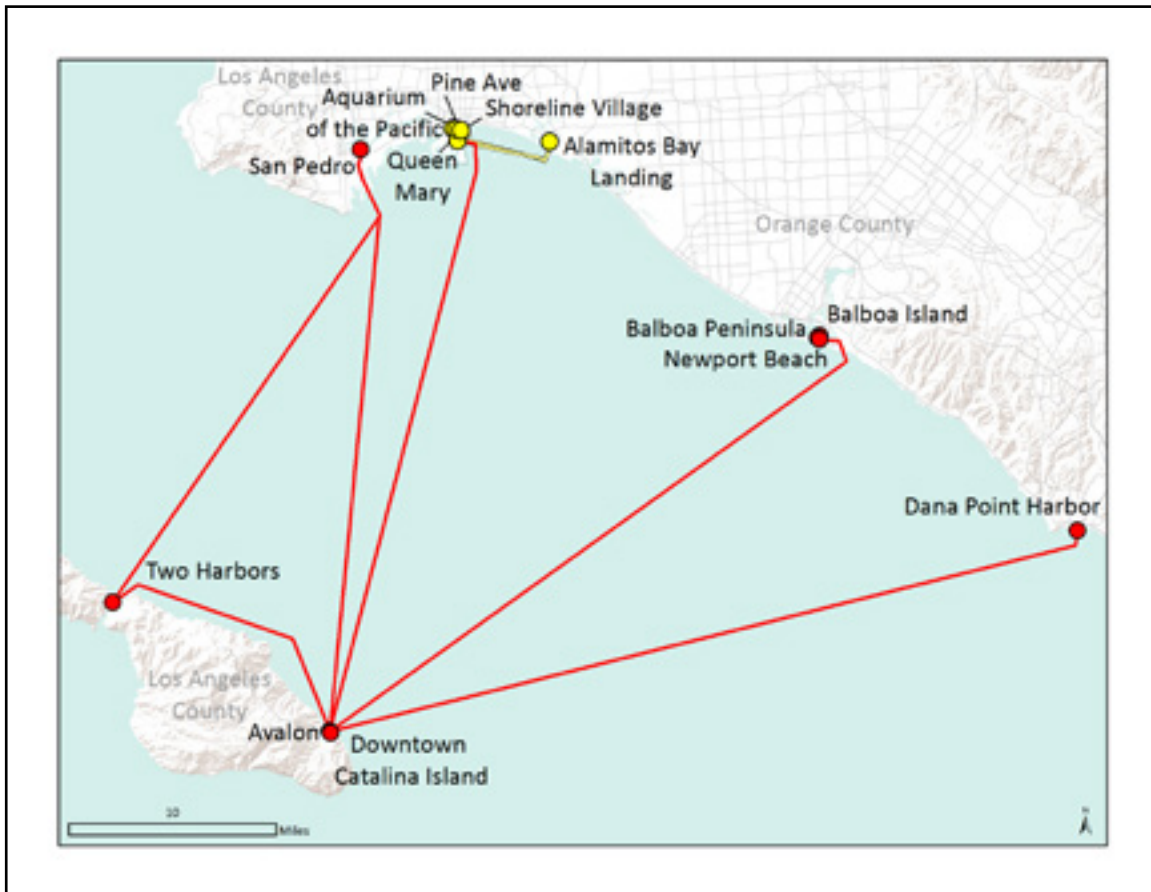


Figure 19. Los Angeles/Orange County Area Water Transit Services

Table 21. Balboa Island Ferry

Type	Commuter
Operates within	Bay
Total number of segments	1
Segment name & length (nautical mi.)	Balboa – Balboa Island (0.17 nmi)
Advertised fares	Adult \$1; Child \$0.50; Car \$2; Motorcycle \$1.50; Bicycle & Adult \$1.25; Bicycle & Child \$0.75
Regulated by	California Public Utilities
Hours of operation	Monday – Sunday 6:30 am - 12 am
Total number of vessels	3
Seating capacity by vessel	75
Car capacity by vessel	3
Bike capacity by vessel	60
Boarding statistics (2011)	Served 1 million passengers; 263,000 cars; 360 average daily trips
Plans for future expansion	No
Ownership type	Private
Operator type	Private
CEO	Seymour Beek 949-673-1070
Contact	Casey Jones 949-673-1070
Website	http://balboaislandferry.com

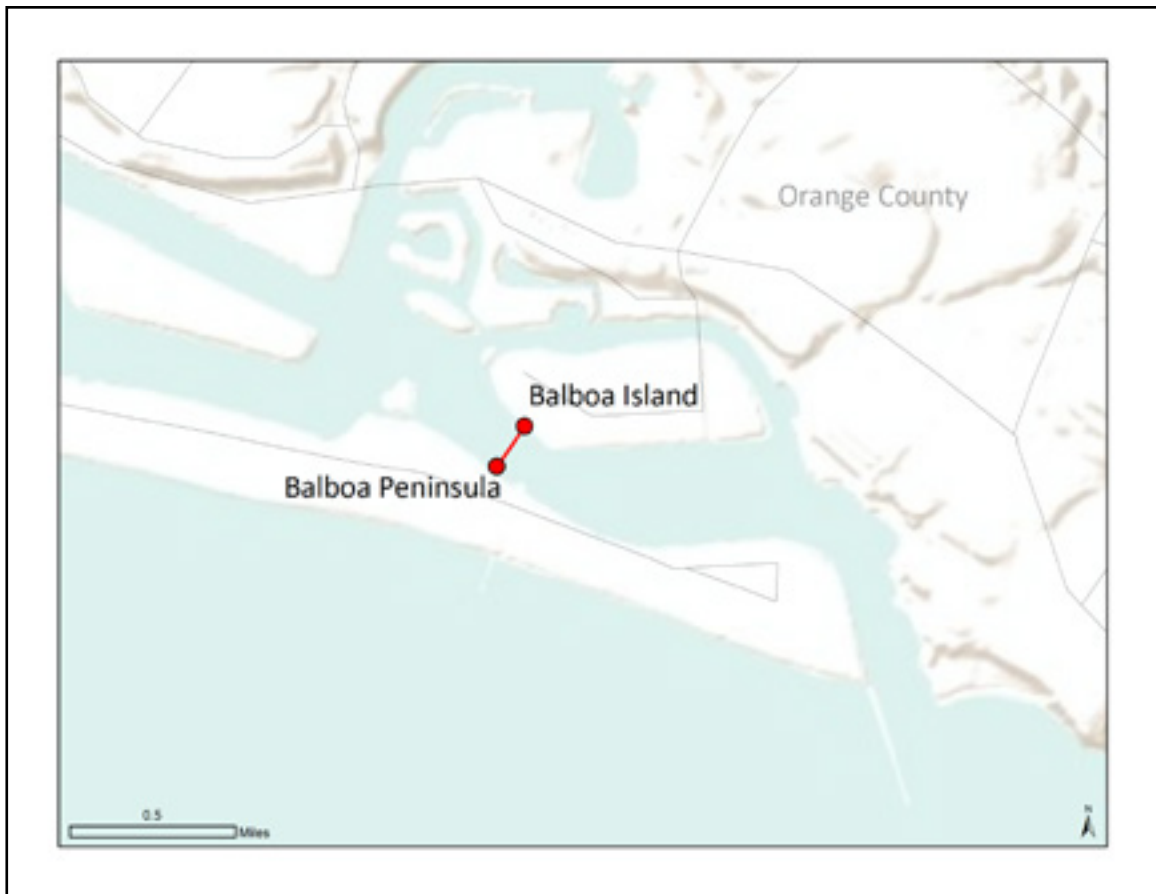


Figure 20. Balboa Island Ferry

Table 22. Catalina Express

Type	Commuter
Operates within	Ocean
Total number of segments	6
Segment names & length (nautical mi.)	Avalon, Catalina Island – Dana Point Harbor (30.00 nmi)
	Avalon, Catalina Island – Queen Mary (30.00 nmi)
	Avalon, Catalina Island – San Pedro (30.00 nmi)
	San Pedro – Two Harbors, Catalina Island (30.00 nmi)
	Avalon, Catalina Island – Downtown Catalina Landing (30.00 nmi)
	Two Harbors, Catalina Island – Downtown Catalina Landing (30.00 nmi)
Advertised fares	Adult \$72.50; Child \$57; Senior \$66; Infant \$5
Regulated by	California Public Utilities
Hours of operation	Monday – Sunday 6:15 am - 8:50 pm
Total number of vessels	8 (+4 Long Beach Transit water taxis)
Seating capacity by vessel	149-350
Car capacity by vessel	N/A
Bike capacity by vessel	8
Boarding statistics (2011)	Served 500,000 passengers; 30 average daily trips
Plans for future expansion	No
Ownership type	Private
Operator type	Private
CEO	Greg Bombard 310-519-7971 x1000
Contact	Tom Rutter 310-519-7971 x1000 trutter@catalinaexpress.com
Website	http://catalinaexpress.com

Note: Operates Long Beach Transit.

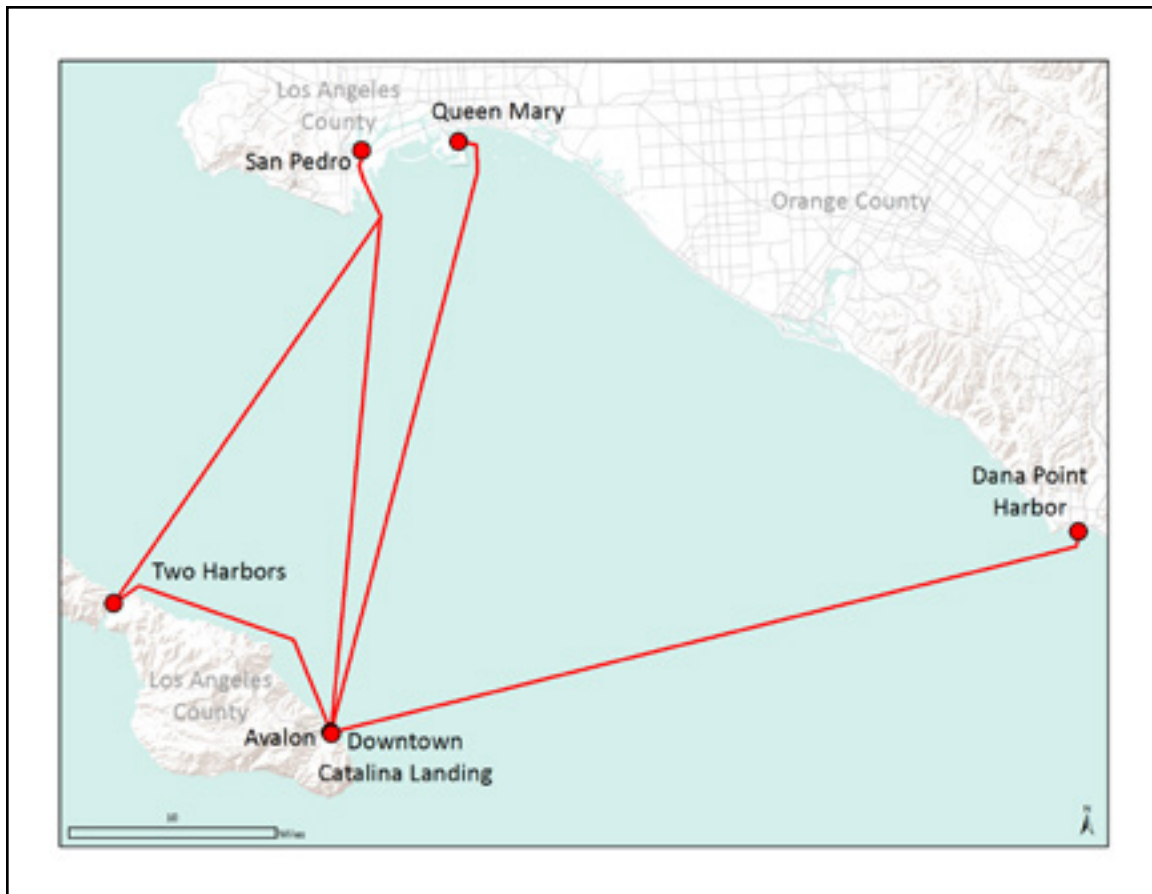


Figure 21. Catalina Express

Table 23. Long Beach Transit

Type	Water taxi
Operates within	Bay
Total number of segments	6
Segment names & length (nautical miles)	Aquarium of the Pacific – Alamitos Bay Landing (5.00 nmi)
	Aquarium of the Pacific – Queen Mary (0.35 nmi)
	Alamitos Bay Landing – Queen Mary (4.65 nmi)
	Aquarium of the Pacific – Pine Avenue (0.05 nmi)
	Pine Avenue – Shoreline Village (0.1 nmi)
	Shoreline Village – Queen Mary (0.25 nmi)
Advertised fares	\$1
Regulated by	California Public Utilities
Hours of operation	Summer Only
Total number of vessels	4
Seating capacity by vessel	37-74
Car capacity by vessel	N/A
Bike capacity by vessel	N/A
Boarding statistics (2011)	Served 35,364 passengers; (2012) Served 50,063 passengers
Plans for future expansion	Not at this time, depends on ridership trend
Ownership type	Private
Operator type	Public
CEO	Lawrence W. Jackson
Contact	Kevin Lee 562-591-2301 klee@lbtransit.com
Website	http://lbtransit.com/Services/Aqualink.aspx

Note: Operated by Catalina Express.

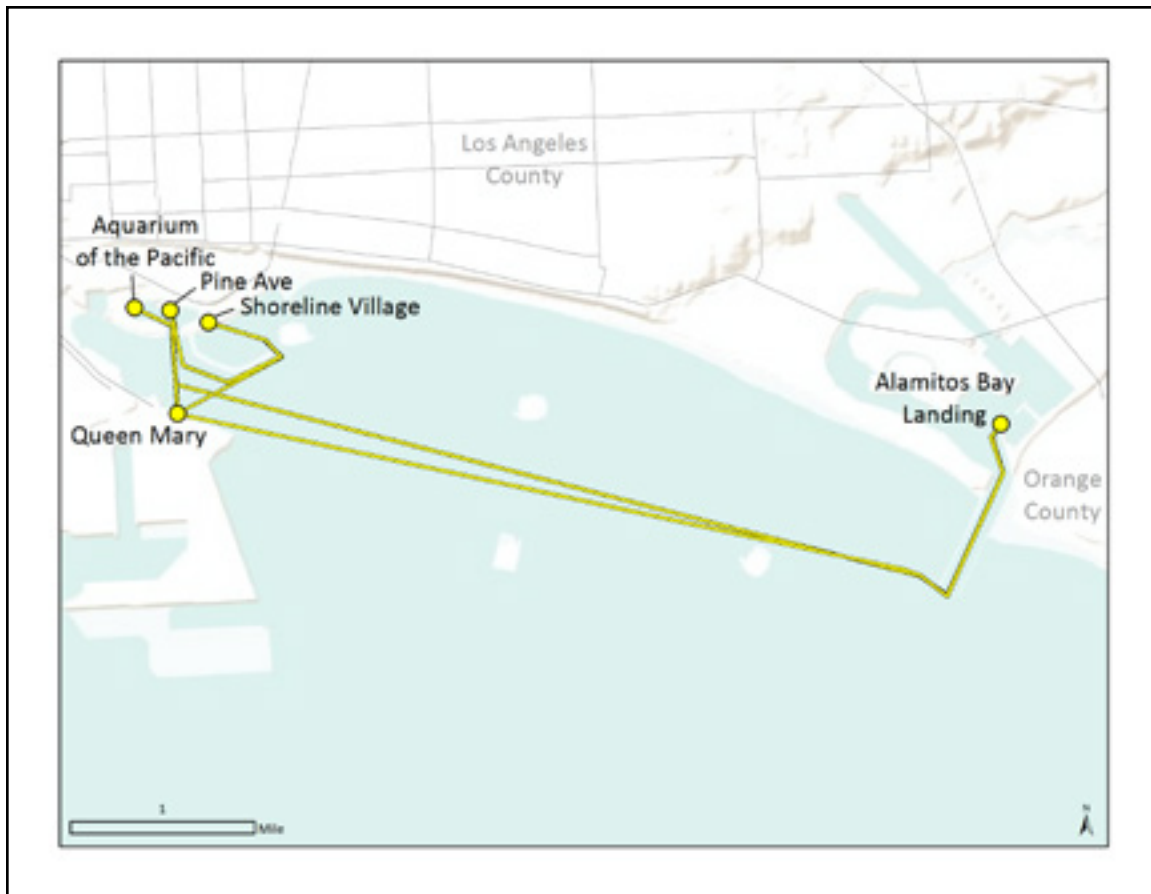


Figure 22. Long Beach Transit

Table 24. Catalina Flyer

Type	Commuter & non-commuter
Operates within	Ocean
Total number of segments	1
Segment names & length (nautical miles)	Avalon, Catalina Island – Newport Beach (28.00 nmi)
Advertised fares	Adult \$69; Senior \$64; Child \$52; Infant \$5
Regulated by	California Public Utilities
Hours of operation	Monday – Sunday 9 am - 5:45 pm
Total number of vessels	1
Seating capacity by vessel	600
Car capacity by vessel	N/A
Bike capacity by vessel	50
Boarding statistics (2011)	Served 88,207 passengers; 246 trips; 1 average daily trip
Plans for future expansion	No
Ownership type	Public/Private
Operator type	Public/Private
CEO	Armond Gugasian 800-830-7744
Contact	Bob Black 800-830-7744 x110 bob@catalinainfo.com
Website	http://catalina-info.com/catalina-passenger-service.html



Figure 23. Catalina Flyer

Table 25. Marina Del Rey Waterbus*

Type	Water taxi
Operates within	Bay
Port locations	Fisherman's Village; Burton Chace Park, Waterfront Walk/Fire Station #110; Marina Beach; Dolphin Marina; Esprit 1; Del Rey Landing
Advertised fares	\$1
Regulated by	N/A
Hours of operation	Summer Only: Friday 5 am – midnight; Saturday 11 am - midnight; Sunday 11 am – 9 pm
Total number of vessels	N/A
Seating capacity by vessel	12
Boarding statistics	N/A
Plans for future expansion	N/A
Ownership type	N/A
Operator type	N/A
CEO	N/A
Contact	310-628-3219; mdr@hornblower.com
Website	http://marinewaterbus.com

* Operator did not respond to repeated requests for information; table entries reflect data available at the operator's website.



Figure 24. Marina Del Rey Waterbus

SAN DIEGO AREA WATER TRANSIT SERVICES

There are a total of two water transit providers in the San Diego area:

- Flagship Cruises and Events
- Mission Bay Water Taxi

These providers, some of which offer both commuter and non-commuter services, are summarized in Table 26.

Table 26. Summary of Commuter and Non-Commuter Water Transit Services in the San Diego Area

Type	Total Number of Operators*	Total Number of Vessels	Total Nautical Miles	Ownership (OW) / Operator Type (OP)	
				Total Number of Private	Total Number Public
Commuter	1	4	10.0	OW: 1 / OP: 1	OW: 0 / OP: 0
Non-commuter	1	4	10.0	OW: 1 / OP: 1	OW: 0 / OP: 0
Water taxi	1	1	N/A	OW: 1 / OP: 1	OW: 0 / OP: 0

* Some operators in this region provide both commuter and non-commuter services and are thus double-counted; see individual operator tables for more detail.

Figure 25 presents an overview of water transit services in the San Diego County area. Red points and lines on the map indicate primary water transit services and yellow points and lines indicate water taxi services.



Figure 25. San Diego Area Water Transit Services

Table 27. Flagship Cruises and Events

Type	Commuter & non-commuter & water taxi
Operates within	Bay
Total number of segments	2
Segment names & length (nautical miles)	Broadway Pier – Coronado Ferry Landing (5.00 nmi) Coronado Ferry Landing – Convention Center (5.00 nmi)
Advertised fares	\$8.50; Water taxi (\$7 one-way)
Regulated by	California Public Utilities
Hours of operation	Sunday - Thursday 9:25 am - 8:25 pm; Friday & Saturday 9:25 am - 10:25 pm
Total number of vessels	4
Seating capacity by vessel	15-250
Car capacity by vessel	N/A
Bike capacity by vessel	32
Boarding statistics (2011)	Served 600,000 passengers; 40 average daily trip
Plans for future expansion	No
Ownership type	Private
Operator type	Private
CEO	George Palermo 619-522-6159 george@flagshipsd.com
Contact	Brad Engel 619-522-6183
Website	http://sdhe.com

Note: Previously known as San Diego Harbor Excursion.



Figure 26. Flagship Cruises and Events

Table 28. Mission Bay Water Taxi

Type	Water taxi
Operates within	Bay
Segment names & length (nautical miles)	Paradise Point Resort - Seaworld (0.5 nmi)
Advertised fares	Adult \$9; Child \$5
Regulated by	Self-regulated
Hours of operation	Summer only 10:15 am - 7:15 pm
Total number of vessels	1
Seating capacity by vessel	21
Boarding statistics (2011)	4 average daily trip
Plans for future expansion	No
Ownership type	Private
Operator type	Private
CEO	Gary Pelder 619-226-2929
Contact	Matthew Hartung 619-246-7171 mhartung@yahoo.com
Website	http://missionbaywatertaxi.com

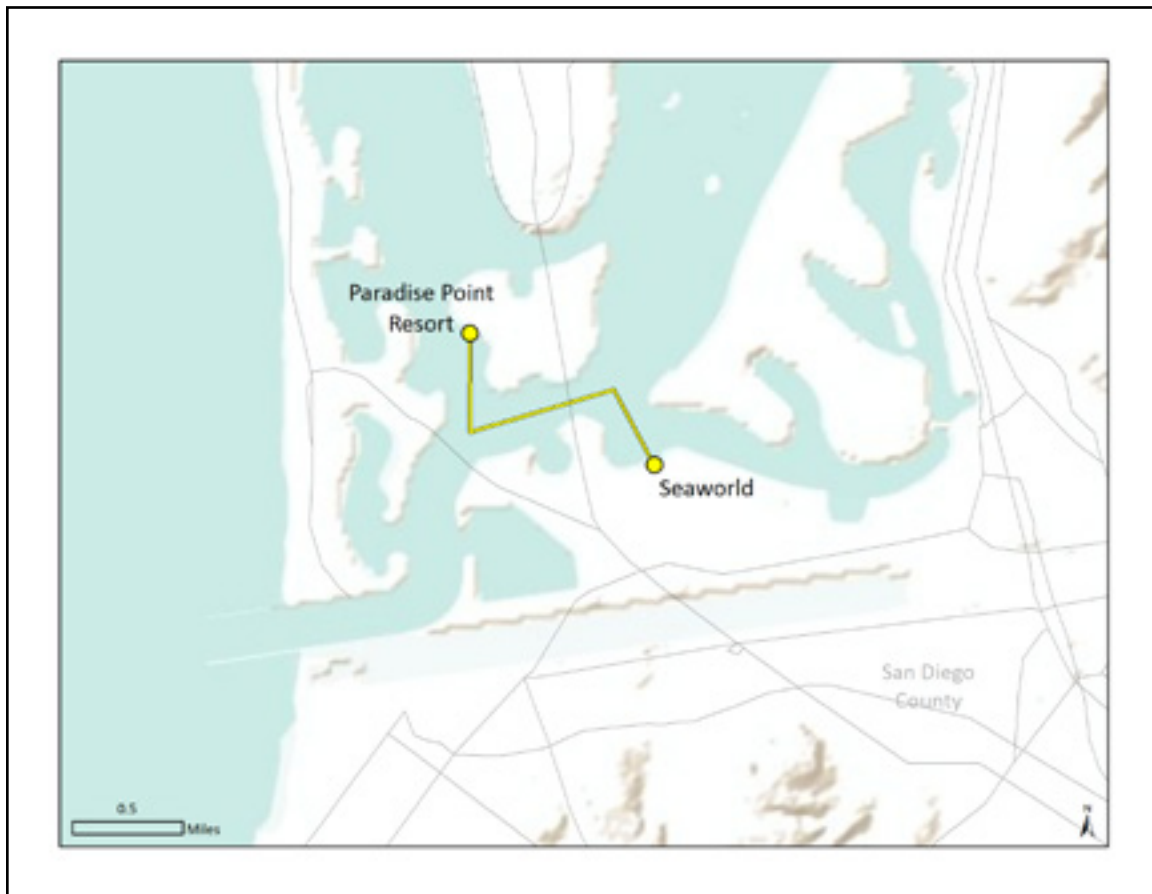


Figure 27. Mission Bay Water Taxi

III. “CIRCULAR”/RECREATIONAL WATER TRANSIT SERVICES IN CALIFORNIA

The previous section provides comprehensive details about each commuter and non-commuter water transit operator in the state of California. In the interest of demonstrating the thoroughness with which we conducted this census, Table 29 presents a listing of 37 additional water transportation operators in the state that we have classified as “circular”/recreational in nature since they do not provide “Point A to Point B” service. The relevant website for the operator is provided if it exists. Our research concluded that these operators were not directly relevant to the scope of services and impetus for this census since they provide lake cruises, charter yachts, whale watching adventures, sport fishing and bay-based “cruises to nowhere.”

Also, since none of the operators listed in Table 29 appear to offer fixed-route service and all are almost exclusively recreational in nature, they did not qualify as meeting the threshold for essential water transportation for residents and commuters of our state. However, future researchers might wish to reference this list in terms of possibilities for providing water transportation in cases of major regional emergencies.

Table 29. “Circular”/Recreational Water Transportation Operators in California

Action Beach and Bay Rentals Inc. (water taxi)	(Website not found)
Anchor Yacht Charters Bay	http://aycharters.com/
Adventure Cat Sailing Cruises	http://adventurecat.com/
Bella Monterey Bay	http://bellamontereybay.com/
Blue Water Hunter; Adult \$9; Child \$5	http://blueh20.com/index.html
Bleu Wave	http://tahoebleuwave.com/
Captain Jack’s Tours & Events	http://captainjackstours.com/
Catalina Classic Cruises Paradise Point Resort - Seaworld	http://catalinaclassiccruises.com/
Celebration Cruises	http://celebrationsantabarbara.com/
Commodore Cruises and Events	http://commodoreevents.com/
Condor Express	http://condorexpress.com/
County of Santa Barbara Parks Division	http://countyofsb.org/parks/parks05.aspx?id=7564
Crowley Maritime Corp.	http://crowley.com/
Cruise Newport Beach	http://cruisewhitebeach.com/
Cruise Orange	http://get2sea.com/
Cruise with Pride	http://cruisingwithpride.com/
D&G Marine Inc.	(Website not found)

Dana Wharf Sport Fishing & Whale Watching	http://danawharf.com/contact.html
Delta Discovery Cruises	http://deltadiscoverycruises.com/
Electra Cruises	http://electracruises.com/
Empress Events	http://empressevents.com/
Hornblower Cruises and Events	(Website not found)
Island Navigation Company Inc.	(Website not found)
Monterey Bay Sailing	http://montereysailing.com/
Napa Valley Adventures	http://napariveradventures.com/
Newport Beach Tours	http://newportbeachtours.net
Newport Landing Whalewatch	http://newportwhales.com/
Next Level Sailing	http://nextlevelsailing.com/
Princess Monterey Whale Watching	http://montereywhalewatching.com/
Red and White Fleet	http://redandwhite.com/
Sacramento Tours	http://sacramentotours.net/
Sacramento Yacht Charters LLC	(Website not found)
Sanctuary Cruises	http://sanctuarycruises.com/
San Diego Yacht Charters	http://sdbaywatchcruises.com/
Santa Barbara Sailing Center	http://sbsail.com/double_dolphin.html
Sea Landing Dive Center	http://sealanding.net/
SF Bay Adventures	http://sfbayadventures.com/
Star and Crescent Boat Company	(Website not found)
Stardust Sport Fishing	http://stardustsportfishing.com
Sunset Kidd Sailing Charters	http://sunsetkidd.com/
Tahoe Cruises	http://tahoecruises.com
Tahoe Gal	http://tahoegal.com/
The Gondola Company	http://gondolacompany.com/
Truth Aquatics	http://truthaquatics.com/index.html
Two Harbors Enterprise Inc.	(Website not found)
Wave Walker Charters	http://wavewalker.com/
Zephyr Cove Resort Lake Tahoe Cruises	http://zephyrcove.com/cruises.aspx

ABOUT THE AUTHORS

RICHARD M. KOS, AICP

Richard Kos is a certified urban planner and geographic information systems expert. After earning a BS degree in Environmental Planning and Design from Rutgers University, Mr. Kos put his skills into practice with local governments in New Jersey and North Carolina, serving as assistant or senior planner for a number of rapidly-growing communities. He earned his masters degree in Urban and Regional Planning from the University of North Carolina at Chapel Hill. In 2000, Mr. Kos served as a transportation planner and GIS analyst with the Metropolitan Transportation Commission in Oakland, California, where he produced numerous maps related to welfare-to-work and lifeline transportation projects. From there, Mr. Kos spent four years as GIS manager for DC&E, an innovative planning and design firm in Berkeley. In 2008, Mr. Kos decided to bring his skills into academia where he currently teaches graduate-level Geographic Information Systems and studio-based community improvement projects at San Jose State University. Mr. Kos also teaches short-term GIS workshops at City College of San Francisco and the California Academy of Art and offers his consulting services to a variety of clients including Mobility Planners, the City of Mountain View, and WorldLink.

MARIA-LOUISE JAVIER

A native of the Bay Area, Ms. Javier earned her bachelors degree in Conservation Resource Studies from the University of California, Berkeley. Her research experiences focus on waste management and education. She has presented her work at two professional conferences and stood on a panel for sustainable college practices. After graduation, Ms. Javier volunteered in Tanzania, Africa, before working in the outdoor education field as a naturalist for two years. She is now working on her masters degree in Urban Planning from San Jose State University. In addition to her work with the Mineta Transportation Institute, Ms. Javier is currently an intern with the City of Fremont Environmental Services Division working on the city's municipal solid waste program. She aspires to work in the urban planning field before pursuing a professorship at the junior college level. Her passion is to plant seeds of thought and action into the next generation. Ms. Javier led the research effort in collecting and organizing the water transit operator data for this report.

BRENT CARVALHO

A self-professed “mapaholic,” Mr. Carvalho is currently earning a masters degree in Urban and Regional Planning at San Jose State University with a focus on community design and development. His passion for mapping has its roots in an introductory GIS class taken with Mr. Kos, and he produced all of the maps for this report. Mr. Carvalho received his BA in Humanities with a minor in Human Sexuality Studies from San Francisco State University in 2005 and became a U.C.C.E. Certified Master Gardener for Santa Clara County in 2011. Understanding food systems and how they operate in our urban and rural landscapes has been his primary research interest.

ASHA W. AGRAWAL, PHD

Dr. Agrawal is the director of the MTI National Transportation Finance Center and also an associate professor and chair of Urban and Regional Planning at San José State University. Her research and teaching interests in transportation policy and planning include transportation finance, pedestrian and bicycle planning, and planning and transportation history. She holds a BA degree from Harvard University in Folklore and Mythology, an M.Sc. from the London School of Economics and Political Science in Urban and Regional Planning, and a Ph.D. from the University of California, Berkeley, in City and Regional Planning. For a complete listing of her publications, see <http://sjsu.edu/faculty/weinstein.agrawal/>.

PEER REVIEW

San José State University, of the California State University system, and the MTI Board of Trustees have agreed upon a peer review process required for all research published by MTI. The purpose of the review process is to ensure that the results presented are based upon a professionally acceptable research protocol. Research projects begin with the approval of a scope of work by the sponsoring entities, with in-process reviews by the MTI Research Director and the Research Associated Policy Oversight Committee (RAPOC). Review of the draft research product is conducted by the Research Committee of the Board of Trustees and may include invited critiques from other professionals in the subject field. The review is based on the professional propriety of the research methodology.

MTI FOUNDER

Hon. Norman Y. Mineta

MTI BOARD OF TRUSTEES

Founder, Honorable Norman Y. Mineta (Ex-Officio)

Secretary (ret.), US Department of Transportation
Vice Chair
Hill & Knowlton, Inc.

Honorary Co-Chair, Honorable John L. Mica (Ex-Officio)

Chair
House Transportation and Infrastructure Committee

Honorary Co-Chair, Nick Rahall (Ex-Officio)

Vice Chair
House Transportation and Infrastructure Committee
United States House of Representatives

Chair, Steve Heminger (TE 2013)

Executive Director
Metropolitan Transportation Commission

Vice Chair, Stephanie L. Pinson (TE 2013)

President/COO
Gilbert Tweed Associates, Inc.

Executive Director, Rod Diridon* (Ex-Officio)

Mineta Transportation Institute

Thomas E. Barron (TE 2013)

President
Parsons Transportation Group

Joseph Boardman (Ex-Officio)

Chief Executive Officer
Amtrak

Donald H. Camph (TE 2012)

President
Aldaron, Inc.

Anne P. Canby (TE 2012)

President
Surface Transportation Policy Project

Grace Crunican

General Manager
Bay Area Rapid Transit District

Julie Cunningham (TE 2013)

Executive Director/CEO
Conference of Minority Transportation Officials

William Dorey (TE 2012)

Board of Directors
Granite Construction Inc.

Malcolm Dougherty (Ex-Officio)

Director
California Department of Transportation

Mortimer Downey (TE 2013)

Senior Advisor
PB Consult Inc.

Nuria I. Fernandez (TE 2013)

Chief Operating Officer
Metropolitan Transportation Authority

Rose Guilbault (TE 2012)

Vice President
American Automobile Association

Ed Hamberger (Ex-Officio)

President/CEO
Association of American Railroads

Hon. John Horsley* (Ex-Officio)

Executive Director
American Association of State Highway and Transportation Officials (AASHTO)

Will Kempton (TE 2012)

CEO
Orange County Transportation Authority

Jean-Pierre Loubinoux

Director General
International Union of Railways (UIC)

Michael P. Melaniphy (Ex-Officio)

President & CEO
American Public Transportation Association (APTA)

William Millar* (TE 2012)

Past President
APTA

Dr. David M. Steele (Ex-Officio)

Dean
College of Business
San José State University

Paul A. Toliver* (TE 2013)

President
New Age Industries

Michael S. Townes* (TE 2012)

Senior Vice President
National Transit Services Leader
CDM/Wilber Smith Associates

Edward Wytkind (Ex-Officio)

President
Transportation Trades Dept., AFL-CIO

(TE) = Term Expiration or Ex-Officio
* = Past Chair, Board of Trustee

Directors

Hon. Rod Diridon, Sr.

Executive Director

Karen E. Philbrick, Ph.D.

Deputy Executive Director and
Research Director

Peter Haas, Ph.D.

Education Director

Donna Maurillo

Communications Director

Brian Michael Jenkins

National Transportation Security Center

Asha Weinstein Agrawal, Ph.D.

National Transportation Finance Center

Research Associates Policy Oversight Committee

Asha Weinstein Agrawal, Ph.D.

Urban and Regional Planning
San José State University

Jan Botha, Ph.D.

Civil & Environmental Engineering
San José State University

Katherine Kao Cushing, Ph.D.

Environmental Science
San José State University

Dave Czerwinski, Ph.D.

Marketing and Decision Science
San José State University

Frances Edwards, Ph.D.

Political Science
San José State University

Taeho Park, Ph.D.

Organization and Management
San José State University

Diana Wu

Martin Luther King, Jr. Library
San José State University



MINETA
TRANSPORTATION INSTITUTE
MTI



SAN JOSÉ STATE
UNIVERSITY

Funded by U.S. Department of
Transportation and California
Department of Transportation

